

February 26, 2006

American Nuclear Society
Attn: Student Section Coordinator
555 N. Kensington Ave.
La Grange Park, IL 60525

Dear ANS Conference Planning Committee,

The Oregon State University (OSU) student sections of the American Nuclear Society (ANS) and Health Physics Society (HPS) would like to host the 2007 American Nuclear Society Student Conference.

OSU's 9th ranked Nuclear Engineering Department (NE & RHP) offers student visitors hands on tours of one of the nations first operating research reactors and the only AP600 and AP1000 certification testing facilities in the nation.

Recognized by the US Department of Energy as the leading institution of the Western Nuclear Science Alliance (WNSA), OSU directs collaborative research with the Idaho National Lab, UNLV, UC – Berkeley, and UC – Davis.

Within the OSU College of Engineering, NE & RHP earns top research dollars per faculty member. Our research programs in advanced thermal hydraulics, advanced computational methods, fluid flow, radiation protection, radiation detection systems, etc. earn top research grants and support innovative partnerships across the nation.

Located in Corvallis Oregon, the OSU Department of Nuclear Engineering & Radiation Health Physics is a prime location for the 2007 ANS conference. OSU's conference facilities include newly renovated student dorm and first-class hotel accommodations, diverse meeting spaces options, and outdoor recreation only available in beautiful Oregon. Founded in 1868, this landgrant institution is among the most historic universities on the West Coast.

Our enthusiastic students, faculty, college and university leaders welcome the opportunity to host this event and all of its guests. We thank you for your time and look forward to welcoming you to OSU!

Best Regards,



Konrad Kulesza
President Chair,
Oregon State University ANS Chapter



Anna Nikiforova
Vice President Chair,
Oregon State University ANS Chapter

2005-06 OSU ANS & HPS STUDENT LEADERS:



President Chair
Konrad P Kulesza
kuleszak@onid.orst.edu



Vice President Chair
Anna Nikiforova
nikifora@onid.orst.edu

Photo Not Available

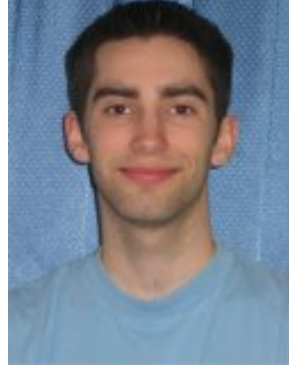
Secretary Chair
Tim Schneider
schrient@onid.orst.edu

Photo Not Available

Treasurer
Richard Wingfield
wingfier@engr.orst.edu



Social Chair
Sonol Joshi
joshiso@onid.orst.edu



Outreach Chair
Anthony Elliot
ellioant@onid.orst.edu

ABOUT ANS AT OREGON STATE UNIVERSITY

Currently, the OSU ANS student chapter includes 78 active and outgoing student members. As a small chapter we demand excellence from our members and achieve major accomplishments as a direct result.

In 2005, fifteen OSU NE & RHP students presented papers at the Ohio State University ANS Conference. Three presentations received either second or third place. Our chapter continues to promote nuclear science by sending sixteen student presenters to the 2006 ANS Student Conference.

A registered OSU student group, our chapter provides nuclear education and outreach through student involvement fairs, university and department organized activities, elementary school science fairs, K-12 and public presentations annually. OSU ANS members also host Radiation Center tours for prospective students, community groups, OSU's Dads weekend and Mom's weekend visitors.

The OSU ANS chapter engages current members, prospective students, and faculty through events including: student vs. faculty basketball and soccer games, pizza nights, bowling and game nights, BBQ's and an annual formal banquet. Our chapter has recently converted an unused library into a student lounge where students now gather to study, collaborate, relax, and interact.

The ANS Chapter at OSU is an active membership striving for excellence in outreach and nuclear science through education.



About Oregon State University

Oregon State University (OSU), Oregon's first public university, is internationally recognized for the quality of its faculty, research programs and public service. OSU offers its 18,000 students over 200 programs in 14 colleges, and attracts more than \$100 million in research grants each year.

These academic programs are complemented by hundreds of student-run organizations. OSU is one of the only West Coast universities to have four cultural centers and minority education offices contributing to the cultural diversity of Corvallis. The beautifully maintained houses

and gardens of student-run fraternities and sororities can be seen near the campus, adding to the beauty of Corvallis.

About Corvallis, Oregon

Corvallis and surrounding areas include more than 50 parks and designated wildlife preserves. And, you can take advantage of more than 60 miles of bike and running paths, as well as excellent backpacking, mountaineering, canoeing, camping, snow skiing, and bike touring.

- The birthplace of computer inkjet printing technology by Hewlett-Packard,
- Home of Nobel Prize-winner, Linus J. Pauling,
- USA Today listed Corvallis as 4th in the nation for the number of patents issued,
- Orange County Register picked Corvallis "Best Pac-10 Campus" (2002),
- Frommer's Cities Ranked & Rated ranked Corvallis 10th best city in the nation of any size.



PROPOSED CONFERENCE SCHEDULE

Proposed Conference Dates in preferential order:

1. March 29th, 30th & 31st
2. March 30th, 31st & April 1st
3. March 27th, 28th & 29th

Proposed Daily Conference Schedule:

Day 1

10:00am – 6:00pm	Registration – Memorial Union Lobby
10:00am – 5:00pm	Rotating Walking Tours: Campus, Radiation Center, Tsunami Wave Lab
6:00pm – 7:00pm	Opening Night Social Reception & Sponsor Tradeshow – Gallery, LaSells Stewart Center
7:00pm – 8:00pm	Plenary – Austin, Auditorium, LaSells Stewart Center

Day 2

8:00am – 9:00am	Judge's Breakfast – Memorial Union, Room TBA
9:00am – 4:00pm	Career Fair / Poster Session – Ballroom, Memorial Union
9:00am – 12:00pm	Technical Session I – Memorial Union, Room TBA
1:00pm – 4:00pm	Technical Session II – Memorial Union, Room TBA
4:00pm – 6:00pm	Engineering Competition – Atrium, Kelley Engineering Center
8:00pm – 11:00pm	Student Mixer: Outdoor BBQ in the Memorial Union Quad

Day 3

8:00am – 10:00am	Professional Development Workshop Breakfast
9:00am – 4:00pm	Career Fair – Ballroom, Memorial Union
9:00am – 12:00pm	Technical Session III – Memorial Union, Room TBA
12:00pm - 1:00pm	Rotating Walking Tours: Campus, Radiation Center, Tsunami Wave Lab
1:00pm – 4:00pm	Technical Session IV – Memorial Union, Room TBA
7:00pm – 9:00pm	Awards Banquet – Cascade Ballroom, OSU Alumni Center

CONFERENCE COORDINATION COMMITTEES

Conference Management

Both graduate and undergraduate student members of OSU ANS have experience hosting conferences for other student organizations that will be valuable in organizing the ANS Student Conference. The following committees and chairs would be formed if Oregon State University were to host the conference:

General Chair:

- Provides overall direction and is ultimately responsible for the success of the event.
- Sets up general plan/milestone chart and works with other Chairs to ensure it is followed.
- The primary interface between the Conference Committee and important guests, faculty, department administrators, SSC and ANS HQ.
- Master of Ceremonies for Awards Banquet.

Technical Committee:

- Chooses topics for technical sessions, sets up sessions and processes abstracts.
- Approves abstract, paper, and presentation formats.
- Approves and publishes presentation and paper evaluation criteria.
- Responsible for recruiting judges and is in charge of awards.

Publicity Committee:

- Writes articles for ANS and Nuclear News.
- Writes press releases and public service announcements for school paper and radio stations.
- Designs brochures and conference transactions.
- Writes announcements for distribution (by ANS HQ and SSC) to schools and student members.
- Arranges for ad space in local papers.
- Designs and maintains conference website.
- Organizes and conducts mass mailings, posting of flyers, and other publicity campaigns.

Financial Committee:

- Arranges to get a tax ID through department or other organization (to solicit tax-deductible contributions).
- Sets up bank account or arranges one through department.
- Organizes and conducts student registration and sponsors solicitation campaign (including letters to ANS Divisions, Local Sections, and companies).
- Tracks transaction revenues and expenses.
- Writes financial reports for the ANS HQ.

Arrangements Committee:

- Reserves hotel and banquet space.
- Reserves session rooms.
- Plans menu, runs meals and conference reception.
- Assists conference attendees with airport shuttle arrangements.

Social Committee:

- Arranges technical and non-technical tours.
- Plans and executes student mixer.

Faculty/Staff Advisor:

- Advises Committee on all aspects of conferences.
- Reports to department of progress.
- Lobbies for department support.

HOSTING THE EVENT: OSU CONFERENCE COMPLEX

The Oregon State University Conference Complex is an extremely unique and flexible meeting space in configuration and administration. The Conference Complex, completed in 2003, consists of the CH2M HILL Alumni Center, the LaSells Stewart Center, and the Corvallis Hilton Garden Inn. The two centers - adjacent to one another, physically connected yet distinct entities - provide meeting space, while the Hilton Garden Inn serves as the headquarters hotel.

Conference Services

OSU has several facilities in which to hold conference events. As a student group recognized by OSU Student Involvement, OSU ANS has access to rooms in the Memorial Union free of charge. In addition, both the LaSells Stewart Center and OSU Alumni Center offer a wide variety of conference and meeting spaces. OSU Catering provides catering services ideal for all meal needs including the Plenary Session and Awards Banquet.

Lodging

Corvallis' newest hotel, The Hilton Garden Inn, sits just one block from conference facilities and offers access to a variety of restaurant and shopping options along the downtown Corvallis waterfront and within walking distance from campus.

Corvallis has 12 hotels/motels offering more than 850 rooming options.

Newly renovated student dormitories are reserved for on-campus conference lodging at a price of \$22.50 per person, per night for up to 250 occupants.

Motel/Inn	Units
<u>Econolodge Willamette River</u> 345 NW 2nds St.	61
<u>Days Inn</u> 1113 NW 9th St	76
<u>Best Western Grand Manor Inn</u> 925 NW Garfield	55
<u>Hilton Garden Inn</u> 2500 SW Western Ave	128
<u>Holiday Inn Express</u> 781 NW Second St	93
<u>Motel 6</u> 935 NW Garfield	61
<u>Corvallis Inn & Conference Center</u> 1550 NW 9th St	120
<u>Salbasgeon Suites & Conference Center</u> 1730 NW 9th	95
<u>Super 8 Motel</u> 407 NW 2nd	101

Airports & Transportation

Both Portland and Eugene airports offer convenient travel to and from OSU/Corvallis. The Eugene Airport is 45 minutes south of Corvallis, and Portland International Airport is two hours north. Based on 2005 Airline rates, the average fare from East Coast locations to Portland, Oregon were between \$320 - \$360 roundtrip.

From the Portland airport students can take a shuttle directly to the OSU Campus for \$76 for a roundtrip. Shuttles run every two hours.

From the Eugene airport, shuttle service can be reserved in advance at \$45 for the first passenger plus \$5 for each additional passenger. This service will take students directly to their hotel.

Shuttle Services:

Anthony's Limousine Airport Shuttle	Provides transportation between Corvallis and the Portland Airport. Phone: 541/753-7831 or 800/546-6158.
Corvallis Transit System	Offers excellent in-town bus service with 11 routes that interact with the Downtown Intermodal Mall or Timberhill Shopping Center.
OmniShuttle	Provides transportation between Corvallis and the Eugene Airport. Phone: 541/461-7959 or 800-741-5097
Roadrunner Taxi	Local taxi service within Corvallis. Phone: (541) 766-8294

Car Rental Services:

Enterprise Rent-A-Car	Phone: (541)758-0000, 800-RENTACAR
Hertz Rent-A-Car	Phone: (541) 758-4101

Local Area Recreation and Entertainment



Evergreen Aviation Museum

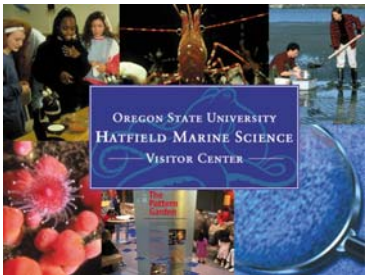
Home of the world famous Spruce Goose and one of the best aviation museums in the Pacific Northwest.

Scenes from the movie The Aviator were filmed here!



Green Gable Gardens

Twenty-eight acres of beautiful gardens plus a six-acre collector's garden. Waterfall, lily ponds, gazebos, footpaths, cut flower fields.



Hatfield Marine Science Center (HMSC)

A research and teaching facility located in Newport, Oregon on the Yaquina Bay estuary, about one mile from the open waters of the Pacific Ocean.

HMSC plays an integral role in programs of marine and estuarine research and as a base for far-ranging oceanographic studies.



Oregon Coast Aquarium

The premier aquarium in the Pacific Northwest. Home to the wonderful passages of the deep exhibit.



Oregon Garden

The Oregon Garden is a botanically challenging, world-class facility which showcases the wealth and diversity of plant material in a visually compelling manner.



Wineries

Several wineries are located in the Willamette Valley, surrounding Corvallis, and are open for tours.

Conference Tours at OSU

OSU boasts numerous research facilities and area attractions which could be used for tours to visiting conference participants. The following is a preliminary list of technical tours we propose for the 2007 conference:

Nuclear Facilities at OSU

- **Oregon State University TRIGA Reactor (OSTR)** - OSU's 1.1 MWt TRIGA MK II reactor has been in operation since 1968. The facility can be pulsed to ~3000 MWt and houses numerous irradiation facilities. The recent additions to the OSTR include a neutron radiography facility.
- **Oregon State University Advanced Thermal Hydraulic Research Laboratory (ATHRL)** - The OSU ATHRL has been integral to the development of next generation nuclear power plant design. The laboratory contains a number of separate effects facilities as well as the APEX and MASLWR integral test facilities.
- **Advanced Plant Experiment (APEX)** - The APEX test facility was used in certification of the only two certified passively safe plant designs in the US, the Westinghouse AP600 and AP1000. An integral system model (1:4 size, 1:2 time, 1:192 volume) of a full scale facility, APEX has been used to model natural convective cooling in both design basis and severe accident scenarios in accordance to NRC certification QA standards.
- **Multi-Application Small Light Water Reactor (MASLWR) Test Facility** - OSU's MASLWR Test Facility is an integral test facility, which is scaled to model the steady-state and transient operation of the prototypical MASLWR facility. The MASLWR design concept is Generation IV small reactor concept to support efforts to build modular proliferation resistant reactors to help power the developing world.

Non-Nuclear Research Facilities at OSU

- **O.H. Hinsdale Wave Research Laboratory** - A leading center for research and education in coastal engineering and near-shore science, the facilities of the Wave Research Laboratory are among the largest and most technically advanced in the world. The facility has considerable expertise on tsunami modeling and damage mitigation. Facilities include the Tsunami Wave Basin, Circular Wave Basin, and the Large Wave Flume.
- **Campus Walking Tour** – See OSU at its best. This walking tour includes historical facts about OSU, buildings on-campus, pioneering founders, landscaping and much, much more!

FINANCIAL OUTLOOK

Preliminary Budget for 2007 Student Conference

<u>Expenses:</u>	<u>Per/Person</u>	<u>Qty</u>	<u>Totals</u>
Facilities & Meeting Space:			
Memorial Union	\$1,500	1	1500
Alumni Center	\$895	1	895
LaSells Stewart Center	\$1,500	1	1500
Rentals, AV, Misc. Equip.	\$500	1	500
		SUBTOTAL	4395
Catering:			
Session Breaks	\$3	300	900
Attendee Breakfast	\$6	300	1800
Reception	\$10	300	3000
Judges Breakfast	\$10	15	150
Banquet	\$20	300	6000
Student Mixer BBQ	\$15	300	4500
		SUBTOTAL	16350
Promotions			
Printing: Copies, programs, signs	\$1,000	1	1000
Direct Mail & Advertising	\$500	1	500
Premium Items: Shirts, conference folders, water bottles, bags, etc.	\$10	300	3000
		SUBTOTAL	4500
Misc.			
Speaker Expenses	\$500	2	1000
Speaker Awards	\$50	7	350
		SUBTOTAL	1350
		Total Expenses	26595
Revenue:			
	<u>Per/Person</u>	<u>Qty</u>	
ANS Sponsorship	1500	10	15000
Corporate Sponsorship	14000	1	14000
Attendee Fees	25	300	7500
		Total Rev	36500
		Rev-Exp	9905

Expenses

Conference expenses include campus facility rentals at student group fees, catering for all conference events, promotions including programs, mailings, and premium items. Misc. expenses include speaker fees, travel, and awards.

Revenue

ANS Sponsorship

OSU Student Chapter members will seek sponsorship funding from ANS Committees at the 2006 Winter ANS Conference hosted in Albuquerque, NM in the amount of \$1,500 per committee.

Corporate Sponsorship Packages

OSU Student Chapter members will seek corporate sponsorship funding from industry partners. Preliminary sponsorship packages are as follows:

	<u>Price/Opportunity</u>	<u>Opportunities Available</u>	<u>Total</u>
Package 1: Title (1)	5000	1	\$5,000
Logo on Program			
Logo & link on conference website			
Awards Night Sponsor			
Booth space at tradeshow			
Public acknowledgement at tradeshow			
Signage			
Plenary Sponsor			
Package 2: Session (4)	1000	4	\$4,000
Slide pre/pro-ceeding session			
Sponsor ack. In program			
Sponsor ack.online			
Public ack. At session			
Signage outside of session			
Package 3: Events			
Speakers	500	2	\$1,000
Student Mixer	1500	1	\$1,500
Judges Breakfast	1500	1	\$1,500
Session Breaks	1000	1	\$1,000
			\$14,000

Attendee Fees

ANS student attendees will be required to pay a one-time conference registration fee of \$25 to help cover conference expense. Additional revenues left at the end of the conference will be equally divided among the number of attendees and reimbursed according to their registration contact information.

STUDENT ATTENDEE ESTIMATED COSTS

Individual student costs are estimated as follows:	
Conference Fee	\$25.00
Lodging	\$67.50
Meals	\$100.00
Transportation	<u>\$435.00</u>
	\$627.50

Conference Fee

ANS student attendees will be required to pay a one-time conference registration fee of \$25 to help cover conference expense. Additional revenues left at the end of the conference will be equally divided among the number of attendees and reimbursed according to their registration contact information.

Lodging

Hotel options range in price from \$86 and up per night and can be divided by the total number of occupants. On-campus dorm options can accommodate 250 and are available for \$22.50 per person/per night regardless of room occupancy.

Meals

The conference includes several meals and break snacks. However, conference participants may choose from a wide variety of local on and off-campus restaurants including Chinese, Mexican, Indian, Italian, Vegan, American, and Fast Food options at their own expense. Average meal prices are: \$5-10 full breakfast, \$6-8 lunch, \$10-15 full dinner making Corvallis and OSU an affordable conference option.

Transportation

Conference attendees may choose from a wide variety of transportation options including rental car, shuttle, community bus system, taxi and more. In addition, all meeting facilities, downtown Corvallis, and most hotel accommodations are within walking distance.

CLOSING NOTES

The Oregon State University Department of Nuclear Engineering and Radiation Health Physics students and faculty would be honored to host the upcoming 2007 ANS Student Conference.

We are confident that given the opportunity we can contribute a successful and enjoyable conference for all. We have a wide variety of interesting experiences at Oregon State University in Corvallis, Oregon.

Thank you again for your time and everything your organization makes possible.

Go Beavers!

-- Oregon State University Student ANS Chapter Members

APPENDICES

I. Sample Presentation Evaluation Form



2007 ANS Student Conference Judging Sheet

Date: / /
Start Time:
Stop Time:
Duration:
Session:

Presentation Title: _____
Presenter(s) Name: _____
School Affiliation: _____
Educational Level: **Undergraduate** or **Graduate**

Content (32 points, 8 points each)

- Clearly States objectives and describes why this research is relevant _____
- Technically correct data (were the conclusions correct, is the data conclusive based on the data shown) _____
- Sources provided for data or discussed how it was obtained _____
- Appropriate number of slides to validate their conclusions _____

Oral Presentation (18 points, 3 points each)

- Introduces the material in an appropriate manner _____
- Explains the Material in a logical manner _____
- Well organized _____
- Speaking Style: rhythm, tone rate, inflection is good _____
- Well managed talk, flows well and transitions are appropriate _____
- Handled questions well _____

Visual Presentation (20 points, 5 points each)

- Easy to view (not too bright, not too light, good contrasts) _____
- Logically organized/arranged _____
- Graphs/charts/figures are explained _____
- Amount of information per slide is appropriate _____

Gestures/Enthusiasm (20 points, 4 points each)

- Eye contact _____
- Professional Attire _____
- Good use of hands, gestures, and mannerisms _____
- Overall excitement at giving the presentation _____
- Were they able to motivate the audience to listen, participate, etc.? _____

Time (10 points)

- Did the Presenter go long enough, too long, or the right amount length of time. _____

Bonus (maximum 5 points, none are required)

- Did the presenter do something extra or beyond the scope to enhance the overall effect of their presentation? _____

Comments to the Presenter:

Judges comments to the Technical Program Chairs:

(this section will be removed before returning the top portion to the presenter)

Judges name/affiliation:

Congratulations!

Total Points:



Sample Paper Evaluation Form
2007 ANS Student Conference Paper Evaluation

Author: _____

Title: _____

Grader: _____

Content – 60%

Is there a logical flow/clear train of thought? _____ / 20

Is the argument based on facts, and do the facts presented support the argument being made? _____ / 20

How is the referenced material used to form independent conclusions? _____ / 20

Graphics/Tables – 10%

Does the student effectively use his/her graphics? _____ / 10

Spelling/ Grammar – 15%

Does the student use proper spelling/grammar? _____ / 15

Reference/Sources – 15%

Is the document properly referenced? _____ / 15

Total Score _____ / 100

Comments:

II. Additional Appendices will be submitted with hard copy proposal via Federal Express, including:

- Oregon State University Conference Complex Guide,
- Local Area Lodging and Visitors Information,
- Transportation Information,
- Oregon Recreations and Sights.