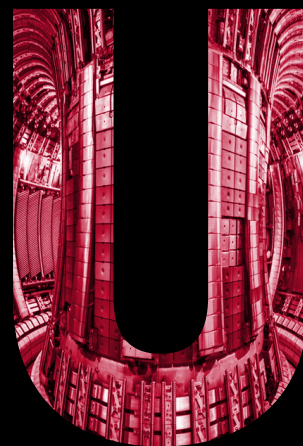
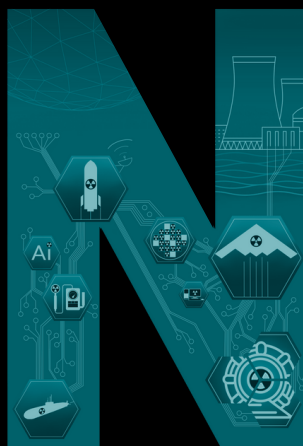
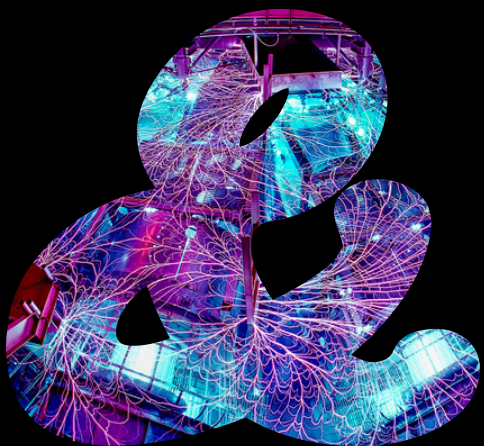


2025 AMERICAN NUCLEAR SOCIETY STUDENT CONFERENCE PROPOSAL



Presented by:
The University of New Mexico
ANS Student Chapter



27 September 2023
American Nuclear Society
Student Conference Selection Committee

To Whom It May Concern:

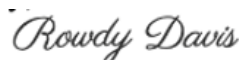
The University of New Mexico's American Nuclear Society Student Chapter is excited to submit this proposal to host the 2025 American Nuclear Society's National Student Conference. Our student section was founded on September 26th, 1967 – before the Department of Nuclear Engineering at UNM existed as a stand-alone department. The department broke away from Chemical and Biological Engineering in 2014. We place great pride in the outreach our student section does within the community and furthering of ANS's Grand Challenges. Our chapter has received the Samuel L. Glasstone Award five consecutive times between 2018 and 2022.

Our theme this year is “*Nuclear: Old and Nu.*” This is to pay homage to the role New Mexico played in the birth of the nuclear industry and laboratories program, while acknowledging the continued role that our department, university and state must play in furthering nuclear science, engineering, and education. We hope the theme and the subsequent activities throughout the conference push attendees to reflect on the past of nuclear engineering – both the progress we've made and the pain the industry and weapons program has inflicted. We also hope the theme allows us to acknowledge these truths and then look forward to creating a stronger future for the atom as stewards of this field. This will be done in many ways – examining the technologies that are at the forefront of our field, and those that are on the horizon, promising a brighter future for power generation, nonproliferation, space travel, and those yet to come. Our student section believes that Albuquerque is a unique place, and because of that, a perfect choice to examine all these things and more.

The University of New Mexico is situated in between two national labs – Sandia and Los Alamos, as well as the Air Force Research Lab, the Nuclear Defense Weapons Center, and other small businesses that have stakes in the nuclear industry. Our department has been fortunate to have the opportunity to collaborate with these labs and companies. We also have a leading research institute on nuclear space propulsion, nationally and internationally recognized professors with research areas in space propulsion, thermal hydraulics, criticality safety, Monte Carlo methods, fusion, and materials science. Our chapter believes that because of our excellent location, the connections present at our institution, and the breadth of knowledge we have to share, this would be an ideal place for a student conference. We invite you to experience unparalleled southwestern cuisine, the Rio Grande and the Sandia Mountain range in all their beauty, and a southwestern city with southern hospitality. Albuquerque is a city of vibrance, history, and diversity – something we hope to share with students and professionals from all around the nation.

Thank you for reviewing our proposal, we look forward to hearing from you.

Sincerely,



Rowdy Davis
Student Conference Committee
Chair



Lauren Bailey
Student Conference Committee
Vice Chair



Ethan Kramer
Student Conference Committee
Vice Chair

Table of Contents

Table of Contents	1
Judge Evaluation Sheet.....	4
Old & Nu.....	5
ANS Student Conference at the University of New Mexico	6
New Mexico TRUE	6
Our ANS Student Section	7
Conference Logistics	8
Date & Time.....	8
Facilities.....	8
Hotels & Accommodations.....	10
Dining	13
Travel	15
Conference Program	18
Speakers	18
Keynote Session.....	20
Technical Panels.....	20
Non-Technical Panels	21
Technical Workshops	21
Non-Technical Workshops.....	22
Technical Sessions	22
Poster Session	23
Career Fair	23
Technical Tours	24
Socials.....	25
Conference Management and Planning	27
Positions and Responsibilities.....	27
Planning Committee Biographies	29
Conflict Resolution	32
Staffing Requirements	32
Milestones.....	35



Budget & Finance 39

 Attendance Projection 39

 Revenue 39

 Expenses 40

 Financial Contingencies 42

 Sponsorship & Fundraising 43

 Banking & Oversight 44

 Cost of Attendance & Reimbursement 45

Website and Social Media 47

 Website 47

 Social Media 47

Liability 48

 ANS Discrimination Policy 48

 Release of Information 48

 Disabilities 48

 Alcohol 48

 Hotels 49

 Transportation 49

 Banking & Expenses 49

 Dining 49

 Personal Injury, Property Damage, & Theft 49

Appendix A: Conflicts Schedule 50

Appendix B: Quotes 51

Appendix C: Judging Forms 74

Appendix D: Graphical Schedule 76

Appendix E: Additional Letters of Support 77

Appendix F: UNM Land Acknowledgement 82



UNM OFFICE OF
ACADEMIC AFFAIRS

August 17, 2023

Via electronic submission

American Nuclear Society
Student Conference Selection Committee

To Whom It May Concern:

I write to strongly support the Student Chapter of the American Nuclear Society at the University of New Mexico (UNM) in their bid to host the 2025 Student Conference. I myself was President of the Student Chapter at my alma mater when we hosted the Student Conference (that was back in the early 1980s), so I know first-hand what a tremendous learning opportunity this is for the student organizers, as well as for the student participants. In this case, I think UNM offers a unique venue, with two NNSA labs (Los Alamos and Sandia) within driving distance and the National Museum of Nuclear Science and History just down the road. This makes Albuquerque an especially rich location for the 2025 Student Conference, with the opportunity for our nuclear learners to rub shoulders with the lab scientists who are working on cutting edge nuclear technologies for the future, while doing so in a state that is rich in the foundations of nuclear technology as well.

As the only nuclear engineering program in the state, UNM boasts a very active and vibrant ANS Student Chapter. At their bi-monthly meetings, guest speakers include UNM staff and faculty, professionals from the research labs and industry, as well as ANS National Officers.

Our student chapter is very engaged in outreach as well, with events such as the *Art of Science* program, which is our “Get to Know Nuclear” event for the local girl scouts. The chapter is also heavily involved in numerous Nuclear Science Week events and activities and is very engaged with the local ANS professional chapter, ANS Trinity, a name that speaks to the nuclear historical importance of our state.

The strength of our ANS Student Chapter has been recognized by ANS national with many Glasstone Awards; we have been honored to receive this award every year since 2018!

Our students regularly attend ANS professional society meetings, so they know what a good conference looks like, and I am fully confident in their ability to pull off a great ANS Student Conference here in New Mexico. They have my full support, and I hope they will have yours as well.

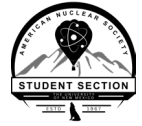
Sincerely,

James Paul Holloway
Professor of Nuclear Engineering
Provost and EVP for Academic Affairs



Judge Evaluation Sheet

PART I - GO/NO-GO (Objective Scoring) <i>Each item is either pass or fail. Optional items in italics - do not mark these as a FAIL.</i>		Page Numbers
Dates	minimum of 2 sets of dates is provided rationale for selection of dates is provided <i>graphical calendar is included</i>	8 8 50
Attendance	projected attendance figures are provided discussion is provided if attendance <400 or >600 discussion of contingency plans is provided	39 39 39, 42
Preliminary Program	graphical schedule is provided event descriptions are provided for all events event descriptions contain logistics notes	76 13-14, 18-25 8-9, 13-14
Facilities	facility descriptions are provided room requirements are estimated room requirements match attendance figures room requirements match event descriptions <i>detailed schedule for each room is provided</i> <i>overall graphical schedule is provided</i>	8-10 8-10 8-10 8-10 8-10 76
Hotels	2 sets of hotels are identified room cost per person is provided hotel capacities are provided map of hotels in relation to other facilities is included	10-12 10-12 10-12 12
Transportation	air travel to local airports is addressed ground transportation from airport to hotel is addressed ground travel from hotel to events is addressed	15 17-18 16-17
Budget	budget matches attendance figures budget matches event descriptions budget matches facility descriptions budget matches transportation descriptions fundraising plan is provided order of budget cuts is identified	39-43 39-43 8-10, 39-42 39-42 43-44 42-43
Banking & Financial Oversight	banking method is identified financial oversight method is identified approach to tax-exempt status is explained	44, 49 44 44
Committee Organization	org chart is provided names are present on org chart description of responsibilities is given for each position committee member experience is provided if chairs are new, letter of endorsement is provided <i>decision-making process for committee is outlined</i>	27 27 27-29 29-32 N/A 27-29, 32
Schedule / Milestones	milestones, key tasks, and target dates are identified tasks are assigned to committee members	35-38 35-38
Staffing	number of day-of staff and rationale are provided roles of staff and reporting relationship are given	32-35 32-35
Liability	liability issues are addressed	48-49
Support	letter from student section faculty advisor is included letter from department head is included <i>other letters are included</i>	78-79 77 3, 80-81
pass or fail?		



Old & Nu

“Learn from yesterday, live for today, hope for tomorrow. The important thing is not to stop questioning.” — Albert Einstein

In the past three years, we have experienced immense change. The COVID-19 pandemic uprooted generations of tradition and dismantled the order we once took for granted. We have adapted to change in unique and unconventional ways to overcome the challenges of a global health crisis.

Nuclear science, in many ways, is the same. We need to keep existing nuclear fleets open, along with expanding the capacity of nuclear power generation. We need to ensure the continuous availability of radioisotopes and that we close the nuclear fuel cycle. We must continue research on advanced materials, simulations, and experimentations to meet necessary design goals. Most critically, we have a responsibility to excite the public with the prospect of nuclear technologies and dispelling nuclear myths.

Understanding the past is critical to successful change. This is the essence of our theme — **Old and Nu**. By learning from the **Old**, we can solve the grand challenges facing nuclear science, and thus progress us toward the **Nu**. There are three ways our conference will engage with **the Old and the Nu**.

1. *Advancing and implementing nuclear technologies* – Without improvements, nuclear science will fall behind other fields of research and industry. Our conference will highlight student research and ongoing efforts to revolutionize the nuclear industry.
2. *Networking between professionals and students* – Nuclear science cannot improve without the transfer of past knowledge. Mentorships between nuclear science experts and newcomers will be the foundation for progress in nuclear science. Panels and socials at the conference will allow professionals and students to form these relationships and continue the transfer of nuclear science knowledge.
3. *Perceptions of nuclear science* – Regardless of the above progress, however, the advancement of nuclear science is only possible with public support. Understanding the concerns for nuclear science involves looking at the history of uranium mining, waste management, and other processes that negatively impacted communities, as well as deriving solutions that are both consensual and that benefit all affected persons.

In pursuit of optimal change in nuclear science, we are motivated by **the Old and the Nu**. The University of New Mexico Student Section of the American Nuclear Society would be honored to host the ANS 2025 Student Conference. We want to guide students through **the Old** and launch the future of nuclear science into **the Nu**.

ANS Student Conference at the University of New Mexico

New Mexico TRUE

Founded in the heart of central New Mexico, the University of New Mexico (UNM) has called Albuquerque its home since 1889. The Duke City is cradled between the majestic Sandia mountains (named for their watermelon hues at sunset) and the ever-flowing Rio Grande. Established in 1706 as a Spanish colony, Albuquerque stood as a vital hub along the historic Camino Real. The city became a cherished nexus where Spaniards traded and sought respite among the indigenous tribes. Today, Albuquerque is home to over 560,000 people from all walks of life, fostering a diverse culture that we “Burqueños” love.



Albuquerque has a rich mix of the “Old and Nu –” from Old Town’s original 1706 colony buildings to “Nu” explosive growth driven by Albuquerque’s low cost of living and growth of the space, technology, and nuclear industries. Albuquerque is affectionately known as both the hot air balloon capital and the chile capital of the world. Whether you are looking for hiking, biking, eating, art, history, sports, zoos, or theatre, Albuquerque has it all.



Besides nuclear science and engineering, Albuquerque also has a strong role in technological innovation and the broader sciences. Sandia National Laboratories’ larger laboratory complex and executive management offices are located in Albuquerque and employ over 6,000 people. Albuquerque is also the seat for the National Museum of Nuclear Science and History. There are several nuclear-related corporations in town that create and calibrate radiation detectors, research plasma physics and fusion, and contract out nuclear services for the

Departments of Energy and Defense. The University of New Mexico (UNM) is a Tier 1 research institution with focuses in (but not limited to) nuclear science and technology, computer science and engineering, electrical engineering, and mechanical engineering science and technology.

New Mexico is home to a storied nuclear history, and this is something that we here at UNM celebrate. With Sandia National Laboratories’ close location and Los Alamos National Laboratory about an hour and half drive from the city, UNM is perfectly positioned at the heart of nuclear innovation. The Department of Nuclear Engineering at UNM has a close relationship with the national labs and surrounding industries. Students and professionals share lectures in classrooms, ideas in laboratories, and even meals in the Student Union Building. Besides the national labs, UNM is also intertwined with much of the nuclear industry here in Albuquerque. With Kairos Power, Sigma Science, Farris Research



Industries, and Urenco USA in close proximity, it's only natural that UNM would have a close relationship with these companies. Professionals from these national laboratories and companies frequently give talks and attend career building opportunities for students.

UNM is committed to educating undergraduate and graduate students in nuclear engineering so that they are knowledgeable and successful in their future careers. UNM currently has 121 undergraduate and 47 graduate students pursuing degrees in nuclear engineering. In addition, UNM's campus spans almost eight hundred acres of Pueblo Revival architecture and lush trees. Our campus is a nationally recognized arboretum and a popular spot for spring photo shoots with its beautiful, blooming desert flowers.

Thus, UNM is a fantastic place to host any kind of event. What makes hosting the ANS student conference here ideal is our unique connection to nuclear history and innovation. Moreover, Albuquerque has much to offer outside of nuclear science. Our city's rich culture, cuisine, and scenery also add to the experience of a conference hosted here.

Our ANS Student Section

The University of New Mexico Student Section of the American Nuclear Society was established on September 26th, 1967. Since 1967, the needs of the surrounding community have changed, as has the size of the chapter. At present, our student section has about 70 undergraduate and 20 graduate student members. Our chapter hosts bi-weekly meetings tailored toward professional development, career highlights from current nuclear professionals, soft skill development from current professors, and toastmaster-type presentations between members to improve presentation skills for conferences and beyond.

We work with the UNM School of Engineering to assist their Engineering Open House and their "Find Your Pack" recruitment event. We also assist UNM in the University's "Welcome Back" days and Friday Night Live celebration to encourage new students to engage with student organizations like ANS. We participate in mutual events with the UNM chapters of the American Institute of Chemical Engineers, the Hispanic Engineering Society, and the Society of Woman Engineers. We host several socials throughout the academic year and plan many events focused on outreach, education, and community partnership. One of the largest events we put on each year is part of "Nuclear Science Week," and this year we had our second "Nuclear Power Week" centering on career opportunities with regional power companies like Kairos and Palo Verde. Our accomplishments are made possible by the dedication of our members, our staff and faculty, and the local ANS Trinity Section. The work we have done in our community and with ANS National has earned us the Glasstone Award numerous times in recent years and we hope to continue our involvement in the community for many years to come.

Conference Logistics

Date & Time

Traditionally, ANS conferences are hosted from Thursday through Sunday – the student conference being no exception. We have decided to maintain this **Old** tradition. Our first choice of dates for the conference is **April 3rd to April 6th of 2025**.

With these dates, students will have completed midterms while still having ample time to finish final projects, study for final exams, and prepare for summer internships.

These dates are also far enough between both summer and winter such that many Albuquerque venues have low mid-season costs. Furthermore, these dates are between the Annual and Winter meetings, which may encourage professionals to attend when they would not have otherwise.

Additionally, Albuquerque weather in the spring ranges in highs from 65 to 85 °F (18 to 30 °C) and lows from 40 to 55 °F (4 to 13 °C). Historic weather patterns show low probability of rain and snow, along with a low probability of winds or gusts greater than twenty miles per hour. Given these temperatures and likely weather conditions, our conference dates provide many great opportunities for tours, events, travel, and general outings.

Our second choice of dates is March 27th to March 30th. While these dates have some of the above-described benefits, we note that some universities have their spring breaks during this period, and we would hesitate to select these dates for that reason. The 13th International Conference on Methods and Applications of Radioanalytical Chemistry (MARC XIII) and ACS Spring Conference are also being held during this time, which would potentially conflict with some students’ and professionals’ plans. Other student conferences have been held during this period, however, so with no other conflicts present, these dates would still have attendance levels seen in the past.

Facilities

We plan to host the main program of the Student Conference at the University of New Mexico Student Union Building (SUB).

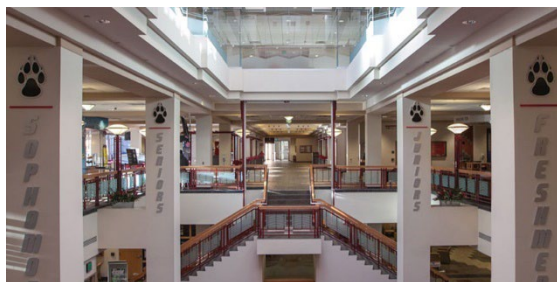


Figure 1 shows the layout of the SUB and its meeting spaces. The ballrooms and food court dining options are on Level 2, while the smaller meeting spaces are on Level 3. There are multiple ramps leading into the SUB and an elevator between floors, allowing for additional accessibility.

We will use the Grand Ballroom for the Thursday dinner and split it into Ballrooms A, B, and C for our Career Fair and Poster Session during the Friday and Saturday program. We will use additional meeting rooms for technical sessions, workshops, career fair interview rooms, and a student volunteer office. These are as follows:

- Technical Sessions: Santa Ana A & B, Acoma A & B, Lobo A & B, and Fiesta A & B

- Workshops (Thur.): Lobo A, Lobo B
- Workshops (Fri/Sat): Luminaria
- Career Fair Interview Rooms: Sandia and Scholars
- Student Volunteer Office: Alumni

The SUB has free Wi-Fi and on-site A/V equipment and support. Other technical equipment is available, including stage units, speaker-phones, laptop computers, DVD players, projection screens, wireless microphones, and portable lighting systems.

Multiple affordable on-site food venues are available for conference attendees, including Dion’s Pizza, Chick-fil-A, Mandalay Express (Asian food), Mercado (grab-and-go convenience store), Twister’s (New Mexican-style burgers and burritos), Subway, Blake’s Lotaburger (New Mexican burgers), and Draft & Table.



Figure 1: UNM Student Union Building Diagram with Room Capacities

Hotels & Accommodations

With the predicted attendance (see Attendance Projection), there is no single hotel option in Albuquerque that can serve our full conference attendance without also booking our conference space with said hotel. Since booking hotel conference space in Albuquerque is much more expensive than utilizing the UNM Student Union Building, we opted for a different solution. Thus, we are planning on having conference attendees at multiple hotels in Albuquerque with a robust transportation schedule between hotels and conference events.

We have provided four hotel quotes — if we select three hotel venues (The Clyde Hotel and two additional hotels), we will satisfy the requirement of our attendance projection. We will encourage students to select a hotel from this selection as we will have transportation between our block-rated hotels and the conference venue.

THE CLYDE HOTEL

The Clyde Hotel is the primary choice for our hotel venue. It is central to many external amenities like Einstein’s Bagel Company, Starbucks, New Mexican eateries, and coffee shops. There are many shops nearby for souvenirs or any last-minute needs. During sunrise and sunset, the hotel rooms offer beautiful views of downtown Albuquerque, the Vistas, the Sandias, and other marvels of the Southwest. The Clyde Hotel has property-wide Wi-Fi, outdoor swimming pools, an on-site fitness center, and a fully equipped business center. Including the hotel’s features, the following amenities are made available for all guests:

- Cable/Satellite TV
- Blackout Drapes
- Keurig Single-Cup Brewers in each room
- Full baths with tub and shower with full amenities
- Spacious Work Desk
- Iron/Ironing Board
- Refrigerator



The Clyde Hotel is surrounded by some of the best restaurants and nightlife in Albuquerque. Carrie’s Restaurant is located at The Clyde Hotel and reflects the energetic and embracing warmth of Carrie Tingley – Clyde Tingley’s wife. 1922 Bar and Lounge is a full-service bar centered around the Prohibition Era, serving local beers and classic cocktails. There is also a Starbucks on-site for quick coffee runs. For those who are not caffeine drinkers, there is also a Keva Juice on-site, which specializes in juices and smoothies. There is also a Mercantile Express Café at The Clyde that serves artisan sandwiches, soups, and salads.

The Clyde Hotel is a five-minute drive (1.5 miles) to the UNM campus. The Clyde Hotel is also ten minutes away from Albuquerque International Sunport and minutes from both the I-25 and I-40, providing easy access to any destination in the city.

Room pricing and availability for The Clyde Hotel are listed below in Table 1.

Table 1: Pricing and Availability of Rooms at The Clyde Hotel

Room Type	Price / Room	Price / Person	Room Count
Single	\$189	\$189	150
Double	\$189	\$94.50	150

THE MARRIOTT ALBUQUERQUE

Another option for lodging is the Marriott Albuquerque. With 135 double rooms, the Marriott can accommodate up to 270 additional conference attendees. The Marriott is within walking distance of New Mexico’s largest shopping mall (Coronado Shopping Center) and other numerous restaurants and shopping centers.



The Marriott Albuquerque is a seven-minute drive (3.5 miles) to the UNM campus.

Room pricing and availability for The Marriott Albuquerque are listed below in Table 2. It should be noted that this cost is for the room option without breakfast — the breakfast option is rated at \$189.

Table 2: Pricing and Availability of Rooms at The Marriott Albuquerque

Room Type	Price / Room	Price / Person	Room Count
Double	\$159	\$79.50	135

EMBASSY SUITES BY HILTON ALBUQUERQUE

The Embassy Suites by Hilton Albuquerque is another option for lodging. With a block of 100 single rooms, each with king beds, this hotel has space for 100 attendees (or more if conference attendees decide to share single rooms).



Embassy Suites by Hilton Albuquerque is a three-minute drive (0.9 miles) to the UNM campus. Additionally, the Embassy Suites is situated between the UNM campus and The Clyde Hotel, providing additional ease for shuttle transportation between the hotels and the UNM Student Union Building.

Room pricing and availability for the Embassy Suites by Hilton Albuquerque are listed below in Table 3.

Table 3: Pricing and Availability of Rooms at The Embassy Suites by Hilton Albuquerque

Room Type	Price / Room	Price / Person	Room Count
Single	\$149	\$149	100

SHERATON ALBUQUERQUE AIRPORT



The final option for lodging is the Sheraton Albuquerque Airport Hotel. With a block of 125 rooms (a mix of singles and doubles), this hotel can hold 190 conference attendees.

The Sheraton Albuquerque Airport is a six-minute drive (2.1 miles) to the UNM campus. Additionally, this hotel is less than one mile from the airport and offers a complimentary airport shuttle for all guests. The Sheraton is 2.2 miles from the University of New Mexico.

Room pricing and availability for the Sheraton Albuquerque Airport are listed below in Table 4.

Table 4: Pricing and Availability of Rooms at The Sheraton Albuquerque Airport Hotel

Room Type	Price / Room	Price / Person	Room Count
Single	\$139	\$139	60
Double	\$139	\$69.5	65

Figure 2 below shows the hotel locations in relation to one another, along with UNM and Sunport.

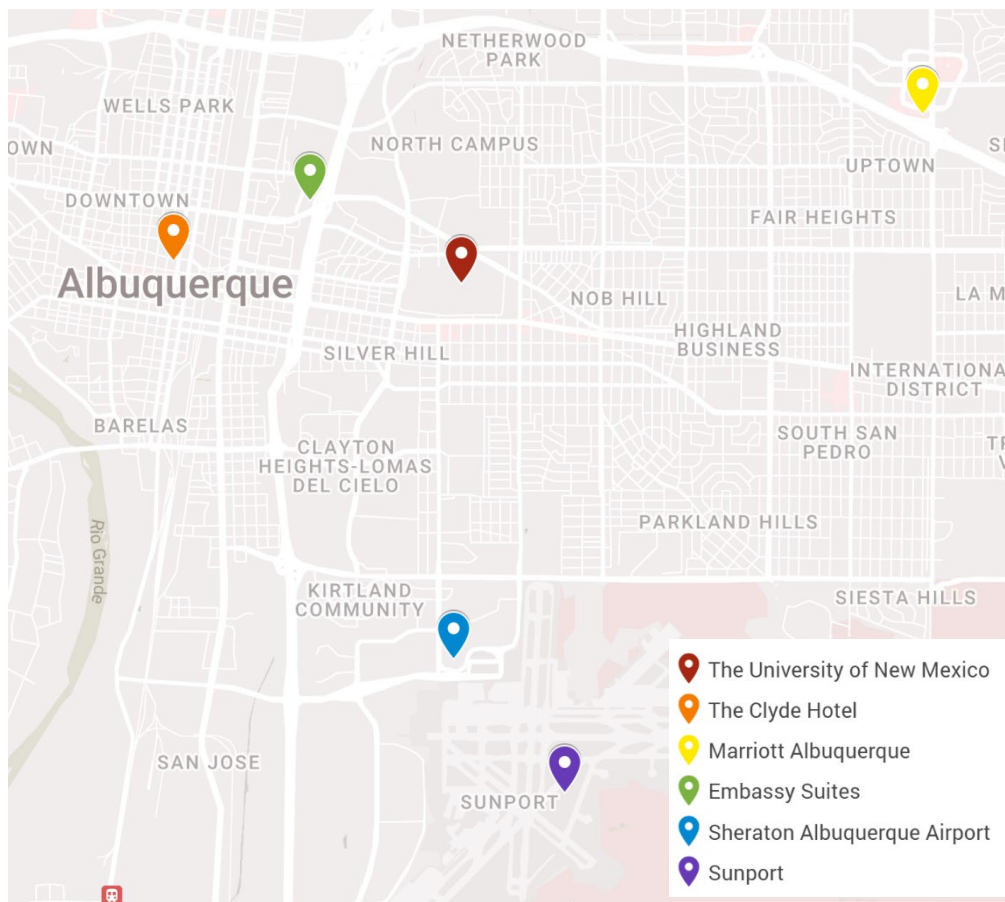


Figure 2: Map of UNM, Hotels, and Sunport

Dining

THURSDAY DINNER

The first dinner will be held on Thursday evening at the UNM Student Union Building and catered by UNM Food. Depending on the selection of a plated dinner or a buffet (see Appendix B: Quotes for more details), the price per person will run between \$25-\$40. Conference attendees will have selected a plated dinner from three options during conference registration and these options include dairy-free, gluten-free, and vegan options. Each conference attendee that is of-age and requests in advance will receive one drink ticket for the beer/wine bar (see Alcohol Section in Liability).

We will also include the UNM Indigenous Peoples' Land and Territory Acknowledgement Statement:

“Founded in 1889, the University of New Mexico sits on the homelands of the Pueblo of Sandia. The original peoples of New Mexico – Pueblo, Navajo, and Apache – since time immemorial, have deep connections to the land and have made significant contributions to the broader community statewide. We honor the land itself and those who remain stewards of this land throughout the generations and also acknowledge our committed relationship to Indigenous peoples. We gratefully recognize our history.”

The UNM Land Acknowledgement Statement has been recommended by the UNM Native American Faculty Council for events on campus. Further information on the statement can be found in Appendix F.

FRIDAY DINNER

The second dinner will be held on Friday evening at the Botanic Gardens at the ABQ BioPark. The BioPark does not allow outside food vendors, so we are also catering through them at an expected average price per plate of \$26. The BioPark is an environmental museum that has a variety of gardens, nature trails, and exhibits for attendees to explore. Figure 3 shows the layout of the ABQ BioPark.



SATURDAY DINNER



The final dinner will be held at the National Museum of Nuclear Science & History. Little Anita's, a New Mexican restaurant chain, will cater the dinner. New Mexican cuisine offers a unique taste of the Southwest and is most well-known for its inclusion of red and green chile. The food options will be enchiladas (meat and veggie options) with chile available on the side, beans, rice, and chips & salsa. During the dinner, attendees will have the opportunity to view and enjoy the museum exhibits. The average price per person will be \$10.75.

While we understand that student conferences generally have more expensive and “fancier” dining options, we want to present a dining option that highlights the Southwest, while still having the option to

cater for a large event. Most New Mexican eateries cannot cater for as large of an event as ours, so we considered Little Anita's for our New Mexican dinner. We also considered Little Anita's for our Friday dinner, but unfortunately, we cannot use outside catering with the ABQ BioPark. We are open to fielding an alternate option for this dinner (potentially in addition to Little Anita's) as some attendees may not be comfortable with trying a new dining experience on the last night of a conference.

ABQ BIOPARK AQUARIUM & BOTANIC GARDEN



Figure 3: ABQ BioPark Aquarium & Botanic Garden Map



Travel

To ALBUQUERQUE - AIR

We will encourage students from all ANS student sections to attend the **Old and Nu** conference. Roundtrip flight prices between airports close to selected universities and Albuquerque are listed in Table 5. American, United, and Delta Airlines were considered, with the median price selected. Flight prices were determined by searching for airfare prices between April 4th and 7th, 2024. Given a similar economic state, these prices should be comparable to flights for our Rank 1 selection of April 3rd to April 6th, 2025.

Table 5: Pricing for Air Travel, Roundtrip, to Albuquerque (ABQ) for Selected Schools

School	State/Region	Airport	Round Trip Cost
Boise State University	ID	BOI	\$642
Brigham Young University	UT	SLC	\$498
Colorado School of Mines	CO	DEN	\$345
Georgia Institute of Technology	GA	ATL	\$552
Idaho State University	ID	IDA	\$643
Massachusetts Institute of Technology	MA	BOS	\$742
Missouri University of S&T	MO	TBN	\$780
North Carolina State University	NC	RDU	\$861
Oregon State University	OR	EUG	\$702
Pennsylvania State University	PA	MDT	\$928
Purdue University	IN	IND	\$849
Texas A&M University	TX	CLL	\$748
The Ohio State University	OH	CMH	\$864
UC, Berkley	CA	SFO	\$502
UC, Irvine	CA	SNA	\$558
University of Florida	FL	GNV	\$792
University of Illinois at Urbana-Champaign	IL	ORD	\$520
University of Michigan	MI	DTW	\$820
University of Missouri	MO	STL	\$688
University of Nevada, Reno	NV	RNO	\$624
University of Puerto Rico in Mayagüez	PR	SJU	\$1488
University of Tennessee	TN	TYS	\$860
University of Texas at Austin	TX	DFW	\$625
University of Utah	UT	SLC	\$512
University of Washington	WA	SEA	\$572
University of Wisconsin - Madison	WI	MSN	\$920
Virginia Commonwealth University	VA	RIC	\$814
Virginia Tech	VA	ROA	\$876



TO ALBUQUERQUE - GROUND

We also recognize that driving is sometimes an easier and cheaper option for attendees to select from when traveling to the student conference. Travel time, distances, and estimated cost to drive from selected schools are listed in Table 6. We limited schools within sixteen hours of drive time for safety and lodging considerations. We also assumed a vehicle with a fuel economy of 25 miles per gallon and a gas price of \$4.00 a gallon (close to the national average in August of 2023). These estimates are for a single driver—students are encouraged to carpool to lower the cost of ground travel.

Table 6: Pricing for Ground Travel to Albuquerque within 16 Hours of Driving

School	State	Round Trip Mileage	Round Trip Cost	One-Way Travel Time
Boise State University	ID	1868	\$298.88	14h 32m
Brigham Young University	UT	1110	\$177.60	9h 8m
Colorado School of Mines	CO	917	\$146.75	6h 41m
Iowa State University	IA	2102	\$336.32	15h 50m
Kansas State University	KS	1388	\$222.08	11h 7m
Louisiana State University	LA	2118	\$338.88	15h 51m
Missouri University of S&T	MO	1874	\$299.90	13h 37m
Texas A&M University	TX	1497	\$239.52	11h 46m
Texas A&M at Kingsville	TX	1744	\$279.04	13h 4m
UC, Berkley	CA	2158	\$345.22	15h 55m
UC, Irvine	CA	1574	\$251.87	12h 9m
University of Missouri	MO	1826	\$292.13	14h 1m
University of Nevada, Las Vegas	NV	1143	\$182.88	8h 14m
University of Nevada, Reno	NV	2030	\$324.80	15h 25m
University of Utah	UT	1206	\$193.06	9h 52m
Utah State University	UT	1361	\$217.79	10h 59m

HOTEL TO CONFERENCE TOURS/EVENTS

We will utilize shuttle service from UNM Parking and Transportation Services (PATS) for transportation between conference hotels and tours, the UNM Student Union Building, and dinners. Each shuttle can support 48 people and, at present, UNM PATS has 15 shuttles and the capacity for large events such as ours. Each shuttle can be requisitioned for \$70 per hour (<https://pats.unm.edu/event-planning/index.html>; see also Appendix C for quote information). Limited transportation will be available Thursday morning/afternoon for students attending workshops at UNM. Full transportation will be available Thursday evening and all-day Friday and Saturday.

This is likely our most “nontraditional” aspect of our student conference. While we would prefer a hotel where most of our conference attendees could stay, there was no hotel in Albuquerque that would offer us a group rate for our group size without also requiring us to use their meeting spaces. Since these prices are high in comparison to those offered by our Student Union Building, requiring some additional costs for transportation between multiple hotels is a reasonable alternative. We also understand that this



presents a logistical challenge, but we have been reassured multiple times by UNM PATS that they service events like ours often and that our plan is achievable.

AIRPORT TO/FROM AIRPORT

We will encourage conference attendees to use Uber, Lyft, and other taxi services for transportation to the airport. Additionally, the Sheraton Albuquerque Airport has a complementary airport shuttle for students to use. Student members are able – and encouraged – to request reimbursement for these expenses.

CONTINGENCY PLANS

If UNM PATS is unable to assist in transportation for the conference (lack of capacity in future academic years or other unforeseen circumstances), we will work with a private shuttle service, such as RoadRunneR Shuttle Services.

Conference Program

Speakers



MELANIE STANSBURY

Melanie Stansbury is the current U.S House Representative from New Mexico’s 1st congressional district, encompassing the University of New Mexico and much of Albuquerque. Prior to her current role, Representative Stansbury served as a member of the New Mexico House of Representatives and served as the vice chair of the Energy, Environment & Natural Resources Committee. Stansbury has a Bachelor of Arts in Human Ecology and Natural Science and a Master of Science in Development Sociology. Before running for office, she was a science educator across New Mexico and a researcher on land and water issues. She later worked in Washington D.C at the Office of Management and Budget and with the committee on Energy and Natural Resources. Stansbury was born and raised in New Mexico, and she has dedicated her work to building a brighter future for the state. Stansbury serves on the House Committee on Natural Resources and the House Committee on Science, Space, and Technology, emphasizing her legislative focus on modernizing our electric grid, improving our water and food systems, and investing in scientific research.



LOU MARTINEZ SANCHO

Lou Martinez Sancho is the Vice President of Strategy and Innovation at Kairos Power. Martinez Sancho has over 20 years of experience managing teams in a variety of industries, including biotechnology, energy, automotive, architecture, engineering, and construction. Martinez Sancho has a bachelor’s degree from Ramon Llull University and two master’s degrees involving physiology, biomechanics, and human factors engineering from Pierre and Marie Curie University and Paris Descartes University. Martinez Sancho focuses on accelerating innovation in the nuclear industry by developing strategic integration of technologies directed for solutions against climate change, ensuring energy supply security, and competitive energy prices.



JAY GLASCOCK

Jay Glascock is the Director of the Office of Site Operations for the DOE’s Office of Legacy Management. Glascock oversees the long-term surveillance and maintenance of over 100 sites within the U.S. and Puerto Rico, ensuring environmental regulations are met. He steers the Defense-Related Uranium Mines (DRUM) program which partners with the DOE, federal land management agencies, state abandoned mine lands programs, and tribal governments to inventory and safeguard over 3,000 mines on public, private, and tribal lands. Through his work, Glascock works on major repair and maintenance projects to ensure environmental remedies are enacted during clean-up to

protect the environment and human health. Glascock received a Bachelor of Science in general engineering from the U.S. Air Force Academy and a Bachelor and Master of Science in civil engineering from the University of New Mexico.



KAREN FILI

Karen Fili serves as President and CEO of URENCO USA (UUSA) in Eunice, New Mexico, which enriches uranium for commercial plants in the U.S. and internationally. Fili has over 34 years of experience in commercial nuclear power and oversees UUSA's business strategies, provides organizational leadership, and ensures safe and compliant operations. Before UUSA, Fili was a Site Vice President for Vogtle 3&4 and Monticello Nuclear Generating Plant. She also worked at Xcel Energy as the Vice President of Nuclear Projects, and at FirstEnergy as the Vice President of Nuclear Oversight. Fili received a Bachelor of Science in Mechanical Engineering from Mississippi State University, and an MBA from Mississippi College. She is an active member in a variety of organizations, including the American Nuclear Society, Women in Nuclear, and the Institute of Nuclear Space and Power Studies. Fili also serves on the Advisory Counsel for the Bagley College of Engineering at Mississippi State University.



MELINA BELINCO

Melina Belinco is the National Liaison Officer to the International Atomic Energy Agency (IAEA) as well as its Deputy Manager of International Organisations. Belinco is the Vice President of Women in Nuclear Global (WiN) and has been a member of WiN Argentina since 2014. She is also a member of the Nuclear Energy Agency (NEA) Gender Balance Task Group. Belinco was recruited as an IAEA expert in capacity building activities to strengthen leadership skills in women and young people interested in the nuclear field and worked as a mentor of the WNU Summer Institute. Belinco is also a Principal Lecturer at the University of Salvador in Buenos Aires, Argentina.



GORDON BRUNTON

Gordon Brunton is the Director of the National Ignition Facility (NIF) at Lawrence Livermore National Laboratory (LLNL). He manages the integration capabilities critical for ensuring that NIF can deliver on its important mission work and in building user community partnerships. Brunton joined LLNL in 2004, and before becoming the Director of NIF, he was its Deputy Director and oversaw the facility's budget, capability planning, and execution. Brunton has also led the NIF & Photon Science Control System section and was responsible for large-scale controls developments, such as the Advanced Radiographic Capability (ARC) laser system. He received a Bachelor of Science in computer science from Heriot-Watt University in Scotland.



ROBERT HAYES

Robert Hayes is an Associate Professor of Nuclear Engineering at North Carolina State University and a joint faculty appointment with Savannah River National Laboratory (SRNL). Hayes worked at the Waste Isolation Pilot Plant (WIPP) and supported MIT with operational and administrative needs for their dark matter telescope. Hayes has experience with science communications, serving as the Associate Editor in Radiation Physics for *Radiation Physics and Chemistry* and writing as an adjunct columnist for *Hobbs News-Sun* while he lived in New Mexico. Now at NC State, Dr.

Hayes works in areas of nuclear nonproliferation, including nuclear assay and retrospective dosimetry, and is also responsible for a growing social media account (@nuclearsciencelover on TikTok) that focus on nuclear science education to the public. Hayes attended the University of Utah, receiving a bachelor's degree in mathematics and physics, a master's degree in physics, and a PhD in nuclear engineering.

Keynote Session

What is **the Old**? What is **the Nu**? Nuclear science is best understood by looking at the relationship between **Old and Nu**. This panel will include an expert from academia, nuclear policy, waste management, advanced reactors, and a graduate student. Emphasis will be placed on using past challenges, achievements, and lessons learned to develop a plan for nuclear science innovation into the future.

Technical Panels

NUCLEAR POLICY

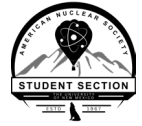
Policy is at the forefront of nuclear science. It helped establish **the Old** by directing nuclear science's development and trajectory. Policy has led to both the innovative advancements of nuclear technologies to the grim and often forgotten malpractice against affected communities. This panel will highlight the adverse nuclear policies against local Native communities that story New Mexico's history and how nuclear policy can evolve for a more inclusive nuclear future into **the Nu**.

NUCLEAR WASTE

Whether **Old or Nu**, handling and storing nuclear waste will always be a concern of nuclear science. This panel will discuss issues involving radioactive waste management (including current waste disposal methods in the form of geological repositories, above-ground disposal, and reprocessing) and the selection of a long-term waste storage facility.

NUCLEAR MEDICINE

Amid a booming age of reactors, the **Nu** advancements in the medicinal branch of nuclear engineering are also taking strides toward a future where nuclear makes a profound impact on our livelihood. This panel will discuss technological advancements in total body and hybrid PET/MR imaging and the importance of nuclear applications within the medical field.



FUSION

Harnessing energy from fusion continues to be a **Nu**, cutting-edge concept that has the potential to advance nuclear power. However, identifying the challenges that linger for fusion power can be a daunting task. This panel will look at recent advancements in fusion technologies and how fusion can bring about a better future for the world.

Non-Technical Panels

BUILDING A PROPOSAL

The proposal for a student conference bid is a daunting task, especially for new student sections. This panel will delve into the necessary brainstorming and organization techniques for writing a successful conference proposal. The panel will focus on how to develop a student conference planning committee, including how to garner student interest, assign responsibilities, and meet deadlines. Emphasis will be placed on lessons learned from **Old** proposals and **Nu** ideas for hosting a conference.

GRADUATE SCHOOL

Undergraduate students often have questions on the topic of graduate school, centered around “Is graduate school the right decision for me?” This panel provides an opportunity for undergraduate students to ask questions to graduate students at various points of their graduate school careers. This panel will offer students a better understanding of how to apply to graduate school, what research and coursework look like, how to receive funding, and other graduate school unknowns. We want students to toss any **Old** misconceptions of graduate school and walk away with **Nu** and better judgments on if graduate school is the right decision for them.

ADVANCING YOUR CAREER

Entering the professional world of nuclear science can be a daunting task for **Nu** graduates. This panel is intended both for those just starting and those looking for ways to advance their nuclear career. The panelists will consist of early and midcareer professionals from diverse backgrounds in industry and academia to offer a breadth of perspectives. The panelists will discuss their experiences entering and getting settled in their careers and share what helped them discover their niche.

Technical Workshops

CRITICALITY SAFETY

Old nuclear criticality accidents mold current public perceptions of nuclear science. To ensure a safe **Nu** future, nuclear scientists should understand the study of criticality safety and embrace safety culture. This workshop will emphasize an understanding of criticality safety and the purpose and structure of the ANSI/ANS-8 Series Standards.

MONTE CARLO - MCNP

Old neutron transport problems required exceptionally long derivations and numerical approximations. In the form of Monte Carlo methods, the Monte Carlo N-Particle Transport Code (MCNP) allows a **Nu** method for solving transport problems. This workshop will introduce students to MCNP and discuss simple problem-solving techniques and common modeling mistakes.



MODELING TECHNIQUES FOR THERMAL-HYDRAULICS

The **Old** way of understanding fluid dynamics required simple problem bounds and systems. The **Nu** now takes advantage of computational developments to model more complex systems, such as coolant loops for reactor systems. This workshop will focus on providing students with an introduction to simulation environments such as Nek5000, RELAP5-3D, and StraCCM+ which focus on computational fluid dynamics (CFD). An introduction to these CFD simulation environments will be provided with emphasis on general modeling techniques in these environments and their applications.

Non-Technical Workshops

RESUME BUILDING

Even though resumes may feel like a relic of the **Old**, resumes are still a key component of any job application. This workshop will offer students the opportunity to hone their resumes with representatives from UNM's Engineering Student Success Center and UNM Career Services. **Nu** conventions and tips on resume writing will be highlighted. Students will also have access to printing services so that they may print resumes for use at the career fair.

TOASTMASTERS

Effective communication is vital for progressing nuclear science from the **Old** to the **Nu**. This workshop will focus on interpersonal communication skills and methods to convey complicated technical information. We will also invite members of the Albuquerque Toastmasters Club to give advice on "mastering the toast."

Technical Sessions

Student research is an integral part of transforming the **Old** into the **Nu**. The technical sessions will run Friday and Saturday in 75-minute blocks on 24 total tracks. Three technical sessions will run at a time.

Prior to the conference, presenters will be assigned a designated time and room for their session. Practice rooms will be available for students prior to technical sessions. Depending on the popularity of the technical sessions and certain tracks, we plan to subdivide the SUB Ballroom at UNM into either 3 or 6 rooms, each holding 125-130 or 65 people, respectively.

Judges will follow the podium presentations rubric form found in Appendix C. The highest scoring paper in each technical track will win the associated track's best paper award.

Divisions for the technical sessions are listed below. For popular tracks, we will offer multiple, non-interfering times (ex: Operations & Power I on Thursday from 1-2:15pm, Operations & Power II on Thursday from 2:30-3:45pm).

- Accelerator Applications
- Aerospace Nuclear Science & Technology
- Computational Medical Physics
- Decommissioning & Environmental Sciences
- Education, Training & Workforce Development 30
- Fuel Cycle & Waste Management



- Fusion Energy
- Human Factors, Instrumentation & Control
- Isotopes & Radiation
- Materials Science & Technology
- Mathematics & Computation for Nuclear Engineering
- Next Generation Reactors & Advanced Reactors
- Nuclear Criticality Safety
- Nuclear Energy Applied to Biology & Medicine
- Nuclear Installations Safety
- Nuclear Nonproliferation
- Probabilistic Risk Analysis
- Operations & Power
- Radiation Protection & Shielding
- Reactor Physics
- Robotics & Remote Systems
- Thermal Hydraulics

Poster Session

Students are invited to share and present their research at the poster session. The poster session will take place on floor 3 in the meeting rooms in the UNM Student Union Building (SUB) on Saturday. Prior to scheduled judging, presenters have time to set-up and practice their poster presentations.

Judging will take place over a three-hour period and will follow the poster session judging rubric form found in Appendix C. Judges will look for poster content, design, and organization and the presenter's ability to communicate their research and answer questions. As undergraduate and graduate students will be judged separately, their posters will be set up in different sections of the meeting rooms. Students must be present at scheduled judging time.

Posters will remain in the SUB following the judging period so that conference attendees may view the posters. Awards will be given at the Saturday Dinner. Awards will include the highest overall score and two honorable mentions each for the undergraduate and graduate poster presentations, totaling six poster presentation awards.

Career Fair

The career fair will be held on Friday from 8 am to 4 pm at the UNM Student Union Building (SUB) meeting rooms and will provide students with opportunities for graduate schools, internships, and careers. Students will have a chance to meet with representatives from many nuclear science organizations, including but not limited to Los Alamos National Laboratory, Sandia National Laboratories, Air Force Research Lab, Urenco USA, Ultra Safe Nuclear Corporation, and Kairos Power. In addition, we will also host colleges and universities with nuclear engineering programs. Under the direction of the Career Fair Supervisor, students and career fair attendees will also be encouraged to



reserve meeting room space in the SUB for onsite interviews. Every company and organization at the career fair will pay a registration fee to cover the career fair cost.

Technical Tours

LOGISTICS

All tours will depart from UNM. Transportation time has been built into the schedule to allow for travel to and from tours. UNM Parking and Transportation Services (PATS) will transport to and from tour sites. For Saturday tours, time has been built in to allow for conference attendees to return to the hotel, shower, and change (if they wish), and then depart to the National Nuclear Museum and still arrive on time for the event. Tour attendees are encouraged to eat lunch at UNM prior to departing. There are food options near and around UNM as well as the tour venues, but the schedule does not allow too much time to depart from the tour site. Staff members will be assigned to each tour to assist in keeping the tour on time.

SANDIA NATIONAL LABORATORIES

ANNULAR CORE RESEARCH REACTOR FACILITY

The Annular Core Research Reactor Facility (ACRR) at Sandia National Laboratories allows researchers to test how materials are affected by proton and neutron irradiation. The ACRR is an epithermal pool-type research reactor with a thermal power of up to 2.4 MW. With high accuracy, this research reactor can determine the radiation dose delivered to test components. A variety of test articles are irradiated at the ACRR, from electronic circuit boards to firing systems and components. Nuclear fuel materials, including fissionable material for experimental and space reactors, are also irradiated at this test reactor. A tour of this facility requires US Citizenship.

Z-MACHINE

The Z-Machine (formerly, the Z Pulsed Power Facility) at Sandia National Laboratories holds the title as the world's most powerful laboratory radiation source. The Z-Machine can create physical conditions irreplicable elsewhere on Earth by using large magnetic fields (with large electrical 33 currents) to produce staggering temperatures, pressures, and X-rays. The Z-Machine is used for a variety of research but is a major player in fusion research.

OPERATIONAL CRITICAL EXPERIMENTS FACILITY

The Sandia Pulsed Reactor Facility-Critical Experiments (SPRF/CX) is a shielded location that allows for critical experiments to be performed, that focus on fuel types and reactor core configurations. Some past experiments that used the pulsed reactor include, the Burnup Credit Critical Experiment and Space Nuclear Thermal Population experiments. The SPRF/CX has a variety of features and equipment, some of which include remote-cabling, capability to perform water-moderated critical experiments, and ability to modify the reactor tank and core configuration. This facility is also utilized for hands-on criticality safety training.

LOS ALAMOS NATIONAL LABORATORY



LOS ALAMOS NEUTRON SCIENCE CENTER (LANSCE)

Founded in 1972, the Los Alamos Neutron Science Center (LANSCE) houses one of the nation's most powerful linear accelerators (LINAC). This 800 MeV LINAC simultaneously provides a beam current to five different major scientific centers— Lujan Center, Weapons Neutron Research Facility, Proton Radiography Facility, Isotope Production Facility and Ultracold Neutrons Facility. This technical tour will give attendees the opportunity to view the LINAC, learn more about operations at LANSCE, and tour the adjacent state-of-the-art facilities.

TA-18

As the Manhattan Project was underway, Technical Area 18 (TA-18) was part of a lab expansion between 1943 and 1944. A tour of this site includes the inside of Slotin Building, the location where Louis Slotin was exposed to a fatal amount of radiation after an experiment with the infamous demon core. Visitors can also see where plutonium research was conducted by Emilio Segre, before exploring areas that were sites of implosion testing. Aside from the nuclear history of this site, it used to be a path that Ancestral Pueblo people used many generations prior, so the dwellings that they carved into cliffs can still be seen.

KAIROS POWER

NON-NUCLEAR RESEARCH FACILITY

Founded in 2016, the California-based Kairos Power chose to expand to Albuquerque in 2019. With ample room for future expansions, their 32-acre Albuquerque facility is located roughly 15 minutes from the University of New Mexico campus at the Mesa del Sol master-planned community. This location was built with the goal of creating a non-nuclear research and development laboratory with the intention to test the Kairos Power high-temperature salt technology. Special nuclear material is not utilized at this facility — instead, they use natural, unenriched uranium to test iterations for their fuel development program.

THE NATIONAL MUSEUM OF NUCLEAR SCIENCE AND HISTORY

MUSEUM TOUR

The National Museum of Nuclear Science and History is the perfect opportunity for students to witness the **Old** which has allowed us to expand into the **Nu** nuclear technology of the twenty-first century. Established in 1969, the National Museum of Nuclear Science and History is dedicated to educating the public on the history of nuclear science and its continued influence on our lives today. The tour will allow students to learn more about nuclear science and how it has become what it is today.

Socials

NUCLEAR TRIVIA & TEA NIGHT

Following the Thursday night dinner in the UNM Student Union Building, students are invited to attend the Nuclear Trivia & Tea Night. The social will occur at the Farris Engineering Center at UNM, a short walk from the SUB. Students will be encouraged to form teams and compete in trivia focusing on



nuclear history's **Old and Nu**. A “varia-tea” of tea, drinks, and snacks will be provided. Students will also be able to visit laboratories and commonspaces available to UNM engineering students.

This social will be alcohol-free as we want to provide students with an opportunity to attend a social without alcohol present.

1922 BAR & LOUNGE

Following the Friday night dinner at the ABQ BioPark, students are invited to attend the Prohibition-era themed speakeasy, the 1922 Bar & Lounge. Situated in the Clyde Hotel, transportation between the hotels will run later this evening. Students will enjoy mingling in this **Old** environment while making **Nu** connections. Students will also be encouraged to wear outfits inspired by the Roaring Twenties.

Conference Management and Planning

Positions and Responsibilities

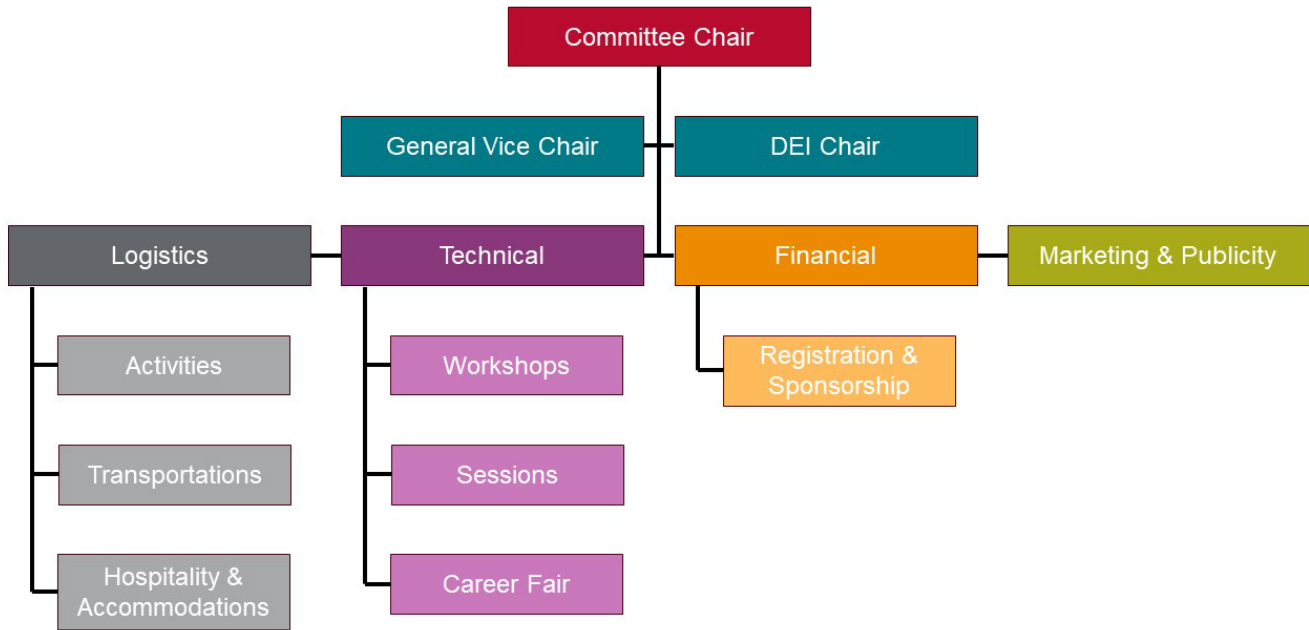


Figure 4: Student Conference Planning Committee Organizational Chart

When establishing the student conference planning committee, the UNM ANS Executive Board met to discuss the responsibilities of appointments and volunteers. The organizational chart in Figure 4 and the descriptions below describe the structure of the student conference planning committee. Each Chair (Technical, Financial, Logistics, and Marketing/Publicity) leads each section’s duties and responsibilities. The Chairs report to the Vice Chairs and Committee Chair for progress checks and concerns.

COMMITTEE CHAIR

The Committee Chair oversees the progress of major milestones and task delegation. They should assist Chairs and Supervisors with challenges that may arise during conference planning. They are the primary contact between Chairs, advisors, and professionals. They shall have the final word on all decisions.

GENERAL VICE CHAIR

The General Vice Chair is responsible for assisting with the execution of tasks and writing the proposal. They should assist the Committee Chair in any of the Committee Chair’s tasks. If the Committee Chair cannot attend a meeting or fulfill a task, the General Vice Chair will step in.

DIVERSITY, EQUITY, AND INCLUSION CHAIR (VICE CHAIR)



The Diversity, Equity, and Inclusion Chair is responsible for ensuring that the conference committee ensures diversity, equity, and inclusion in all aspects of the conference. They are also responsible for the roles of the General Vice Chair and will step in if the Committee Chair and General Vice Chair are both unable to attend a meeting or fulfill a task.

TECHNICAL CHAIR

The Technical Chair is responsible for planning and executing the technical aspects of the conference. They assist the Technical Supervisors with assigned tasks, goals, and milestones. They will oversee paper submissions and will set judging criteria.

WORKSHOP SUPERVISOR

The Workshop Supervisor is responsible for planning and organizing workshops. They are also responsible for creating a list of expenditures, student registrants, topics, venues, staffing requirements, and other tasks relevant to the workshops.

TECHNICAL SESSIONS SUPERVISOR

The Sessions Supervisor oversees support for the poster sessions, presentations, workshops, and the timing and execution of technical events. They also assist the Activities Supervisor with execution and timing of non-technical events.

CAREER FAIR SUPERVISOR

The Career Fair Supervisor is responsible for planning and executing the career fair. They reach out to relevant companies, universities, and sponsors to establish a diverse presence at the conference. They also ensure that career fair participants have the necessary items they need for a successful fair. They will work closely with the Logistics and Sponsorship Supervisors.

FINANCIAL CHAIR

The Financial Chair is responsible for all financial aspects of the conference. They will work closely with UNM's Student Government Accounting Office, the Department of Nuclear Engineering's accountant, and ANS National to manage the budget. They are responsible for creating the budget, ensuring all facets of planning and execution stick to that budget, delivering a financial status report during committee meetings, and creating a financial report for ANS National.

REGISTRATION & SPONSORSHIP SUPERVISOR

The Registration & Sponsorship Supervisor is responsible for coordinating with the Financial Chair on registration revenue. They also will work with both ANS National and the Financial Chair to assign appropriate discounts at registration, and to waive/subsidize registration fees for appropriate sponsors. To that end, they will work with the Financial and Vice Chair to secure sponsors.

LOGISTICS CHAIR

The Logistics Chair oversees volunteer recruitment, ensuring that conference staffing needs are met. They will work closely with the Logistics Supervisors to ensure their goals and milestones are met.

ACTIVITIES SUPERVISOR



The Activities Supervisor is responsible for all activities (technical and non-technical) that take place during the conference, including tours, socials, and banquets. The Activities Supervisor will work closely with the Technical Supervisors to ensure that workshops, sessions, and the career fair are properly managed and organized.

TRANSPORTATION SUPERVISOR

The Transportation Supervisor works with UNM Transportation Services, hotels, and other vendors to ensure transportation between the airport and the hotel, as well as the hotel and conference venues.

HOSPITALITY & ACCOMMODATIONS SUPERVISOR

The Hospitality/Accommodations Supervisor coordinates with the conference facilities to ensure that any accessibility requirements, dietary restrictions, and other needs are met to ensure an equitable and enjoyable conference for all conference attendees. They will plan lodging, assist in meal planning, and assist in scheduling events around transportation, dining, and other conference events.

MARKETING & PUBLICITY CHAIR

The Marketing and Publicity Chair writes necessary announcements for ANS and student members. Before, during, and after the conference, they will manage the conference’s social media presence. They will also manage the conference app. They will organize and execute media campaigns with KRQE (the local news station), The Daily Lobo (the UNM Newspaper), and the Albuquerque Journal (the local newspaper). They will also manage the conference tab on the UNM ANS website.

Planning Committee Biographies

ROWDY DAVIS – COMMITTEE CHAIR

Rowdy graduated from UNM with his BS and MS in 2020 and 2021, respectively. He is currently working on his PhD under Dr. Christopher Perfetti. He got involved with ANS in 2016 and has served on the executive board since 2017 as the internal communications officer and then as the treasurer. He now serves as a member at large. Rowdy currently serves on the SSC Local Sections Subcommittee. He will be graduating with his PhD in 2024 and will stay at UNM as a faculty member. This is the second time Rowdy has chaired a Student Conference planning committee. He has attended multiple student, national, and winter conferences and has led other subcommittees in the past with planning and execution as his focal point.

ETHAN KRAMMER – GENERAL VICE CHAIR

Ethan is a first-year graduate student working toward his MS and PhD in Nuclear Engineering. Ethan graduated from UNM in 2023 with a BS in Nuclear Engineering and a BS in Applied Mathematics. Ethan initially got involved with ANS in 2019 and was the UNM ANS Student Section President for the 2021-22 academic year and now serves as the student section’s treasurer. Ethan is interested in computational research involving nuclear data and sensitivity analysis. He has also attended multiple ANS conferences. In his free time, Ethan can be found discussing electoral politics and winning against his friends at Mario Kart. He will be at UNM through 2026.



LAUREN BAILEY – DIVERSITY, EQUITY, AND INCLUSION CHAIR – VICE CHAIR

Lauren is a senior working towards her BS in Nuclear Engineering, and she plans to continue onto graduate school to obtain her PhD. She works at Sandia National Laboratory as a year-round intern doing research and development in electrochemistry. Lauren got involved with ANS in 2022, serving as the UNM ANS President for the 2022-2023 academic year, and now serves as a member-at-large. She is also the student liaison for the Decommissioning and Environmental Science ANS professional division. She joined ANS because she thought it was a fantastic opportunity to get involved with peers and help facilitate outreach in the community to encourage nuclear support and education. Lauren will be at UNM through 2028.

MEKIEL OLGUIN – TECHNICAL CHAIR

Mekiel graduated from UNM with his BS and his MS in 2021 and 2022, respectively. He is continuing to further his education at UNM by pursuing a PhD under Dr. Christopher Perfetti while also working as a member of technical staff at Sandia National Laboratories. His area of research is the application of sensitivity analysis methods to coupled photon-electron transport. He joined ANS in 2017 because it offers the unique opportunity to interact with the local community, like-minded students, and professionals in the field. Mekiel will be at UNM through 2026.

ALEXANDRA MARTINEZ – WORKSHOP SUPERVISOR

Alexandra is a senior working towards her BS in Nuclear Engineering with a minor in Chemistry, and she plans to continue onto graduate school. She is currently a research assistant in the Advanced Thermal-Hydraulics Laboratory at UNM. She is an active participant in the UNM ANS section, joining in 2022, and is the current Policy and Outreach officer. Alexandra joined ANS for the wonderful opportunities it provides students to build networks with not only their local academic communities but those all over the country. She finds the outreach and communication that ANS performs on the behalf of the nuclear community to be invaluable and wants to contribute to that while in her position with UNM’s ANS section.

ROMAN MARTINEZ – TECHNICAL SESSIONS SUPERVISOR

Roman is a junior working towards a BS in Nuclear Engineering with the intention of continuing his education in graduate school at UNM. Currently he holds a year-round internship at Sandia National Laboratories assisting the Mechanical Calibration lab. Roman is a current member of the UNM ANS Executive Board, serving as the Internal Communications Officer. He joined ANS to learn and get further involved in the nuclear community.

KEVIN GARCIA – CAREER FAIR SUPERVISOR

Kevin is a senior undergraduate student pursuing his BS in Nuclear Engineering. He has held engineering internships at Urenco USA and the Nevada National Security Sites. Kevin joined ANS because he wanted to meet like-minded students and professionals. He also wanted to get involved with the local community to inspire people toward the pursuit of nuclear science.

NICHOLAS BORREGO – FINANCIAL CHAIR



Nick graduated from UNM in 2023 with his BS in Nuclear Engineering. He is now pursuing a PhD in Nuclear Engineering under the advisement of Dr. Minghui Chen. Nick is interested in thermal hydraulic analysis of advanced reactor designs for the next generation of nuclear power. He recently joined ANS to learn more about the ongoing research for advanced reactor designs and to network with other graduate students.

SHANE EVANS – REGISTRATION AND SPONSORSHIP SUPERVISOR

Shane is a first-year graduate student within UNM’S Department of Nuclear Engineering. His current research involves nuclear materials — specifically for fusion applications — working with Dr. Eric Lang. He has had internships at Lawrence Livermore National Labs and Sandia National Laboratories. He is excited to work with the UNM conference committee to bring the ANS student conference to Albuquerque for the first time ever.

ABIGAIL KRUGER – LOGISTICS CHAIR

Abigail is a sophomore at UNM working towards her BS in Nuclear Engineering with a minor in American Sign Language and certificate in National Security and Statistical Analysis. She joined ANS in 2021 and got more involved in the 2022-2023 academic year; she now serves as the President of the UNM ANS chapter. Abigail joined ANS to find a community that has a passion for the same things she does, as well as get more involved in the nuclear community and make connections. Abigail will be at UNM through 2026.

LIAM POHLMANN – ACTIVITIES SUPERVISOR

Liam is a junior undergraduate student pursuing his BS in Nuclear Engineering and Computational Mathematics. He believes that the UNM Nuclear Department — a growing department filled with devoted students and professors — offers an environment capable of welcoming likeminded individuals.

SARRON SIMPSON – TRANSPORTATION SUPERVISOR

Sarron is a sophomore undergraduate student working towards his BS in Nuclear Engineering. He is currently an Atom Optics R&D Intern at Sandia National Laboratories and has prior experience with organizational leadership and event planning. Sarron is also a drone pilot and has an interest in aviation technologies.

MICHAEL TROMBETTA – HOSPITALITY & ACCOMMODATIONS SUPERVISOR

Mike is a junior undergraduate student working towards his BS in Nuclear Engineering. He is interested in nuclear power because he believes it is the best currently available carbon-neutral energy source, and that it can help mitigate climate change. He is originally from Chicago, Illinois, and enjoys playing hockey and hiking in his free time.

COURTNEY MACE – MARKETING & PUBLICITY CHAIR

Courtney is a senior working towards her BS in Nuclear Engineering. Upon graduation she will be working in the Nuclear Deterrence Division with the DoD at the fast burst reactor in White Sands Missile Range, NM. Courtney is an active participant in the UNM ANS section, joining in 2022, and is its current Historian. She joined ANS to better network with her peers and professionals in the field. She



is excited to apply the skills she has learned as Historian of the ANS student section to her role as Publicity Chair on this conference board.

Conflict Resolution

It is expected and has been made clear that all members of the student conference planning committee are expected to be professional at all times in all that they do in the furtherance of the mission of the planning committee.

If an issue does arise, members will resolve it between themselves in an amicable fashion. In the event a conflict does arise under the scope of duties related to the student conference and it cannot be resolved amicably between members, the committee sub-chairs are expected to handle it within their groups. If that is not successful, the Committee Chair, General Vice Chair, and DEI Chair will see to a resolution between conflicting parties. The Chair has the final say on all decisions and will pick the option that they determine is best for the planning and execution of the conference.

If the conflict between members is personal and not related to the conference, they are expected to either be professional in all aspects of planning and execution or resolve it outside of the planning committee to where it is no longer a problem. If a resolution cannot be met, the Chair and Vice-Chair will identify the offending party(s) and remove them from the planning committee after consulting with the faculty advisor.

Staffing Requirements

The UNM Department of Nuclear Engineering fully supports the UNM ANS Student Section in hosting a conference and is committed to doing whatever is necessary to ensure it is successful in all facets including, but not limited to, staffing. The general student body in the department is committed to assisting with staffing for the conference (note that a significant portion of our undergraduate and graduate nuclear engineering students are involved with ANS).

We also have close partnerships with the UNM student sections of the Society of Women Engineers, Institute of Nuclear Materials Management, and American Institute of Chemical Engineers. These student sections have vowed to assist with staffing should the need arise. The School of Engineering's Engineering Student Success Center also has students and staff able to assist with event coordination and staffing, along with experience in the execution of large-scale events. We will provide a designated volunteer room during the conference for the purpose of holding meetings, distributing refreshments, and serving as a rest space for volunteers. We will also provide volunteers with a conference shirt to set them apart from other conference attendees.

Table 7 lists the staffing requirements by event/task for each day of the conference. Note that some tasks could be completed by a single person — for example, a student may serve as both a registration assistant and a dinner assistant on Friday.

Table 7: Staffing Requirements for Conference

Event/Task	Lead Coordinator	Point of Contact	# of People	
<i>Chair and Vice Chairs will be available and assisting throughout the conference</i>				
Thursday				
Registration and Arrival	Registration and Sponsorship Supervisor			
Greeter		Hospitality/Accommodations Supervisor	2	
Registration		Hospitality/Accommodations Supervisor	4	
Technical Session	Technical Chair			
Technical Support		Technical Supervisor	1	
Workshop Support		Sessions Supervisor	3	
Non-Technical Session				
Technical Support		Technical Supervisor	1	
Workshop Support		Sessions Supervisor	1	
Photo/Headshot Coordinators		Activities Supervisor	2	
Tours		Logistics Chair		
Tour Guides/Assistants			Activities Supervisor	4
Meals		Vice Chairs		
Meal Coordinator	Activities Supervisor		4	
Lunch Assistants	Activities Supervisor		4	
Dinner Assistants		Activities Supervisor	4	
Miscellaneous	Marketing & Publicity Chair			
Conference/Hotel Liaison		Hospitality/Accommodations Supervisor	1	
Conference/Travel Liaison		Transportation Supervisor	1	
General Support		Chair	8	
			Total Support (Thursday): 40	
Friday				
Registration	Registration and Sponsorship Supervisor			
Greeter		Hospitality/Accommodations Supervisor	1	
Registration		Hospitality/Accommodations Supervisor	2	
Technical Session	Technical Chair			
Technical Support		Technical Supervisor	2	
Workshop Support		Sessions Supervisor	4	
Technical Track Support		Technical Supervisor	3	
Non-Technical Session				
Technical Support		Technical Supervisor	1	
Workshop Support		Sessions Supervisor	1	
Panel Sessions				



Event/Task	Lead Coordinator	Point of Contact	# of People
Technical Support		Technical Supervisor	1
Panel Support		Sessions Supervisor	4
Meals			
Meal Coordinator	Vice Chairs	Activities Supervisor	1
Dinner Assistants		Activities Supervisor	4
Career Fair			
Recruiter Assistants	Technical Chair	Technical Supervisor	4
Career Fair		Technical Supervisor	4
Social			
Social Assistants	Logistics/Marketing & Publicity Chair	Sessions Supervisor	2
Miscellaneous			
Conference/Hotel Liaison	Marketing & Publicity Chair / Vice Chairs	Hospitality/Accommodations Supervisor	1
Conference/Travel Liaison		Transportation Supervisor	1
General Support		Chair	10
			Total Support (Friday): 46
<i>Saturday</i>			
Technical Session			
Technical Support		Technical Supervisor	2
Workshop Support		Sessions Supervisor	4
Technical Track Support	Technical Chair	Technical Supervisor	3
Panel Sessions			
Technical Support		Technical Supervisor	1
Panel Support		Sessions Supervisor	2
Meals			
Meal Coordinator	Vice Chairs	Activities Supervisor	1
Dinner Assistants		Activities Supervisor	6
Career Fair			
Recruiter Assistants		Technical Supervisor	4
Poster Session			
Set-Up Assistants	Technical Chair	Technical Supervisor	5
Viewing Assistants		Technical Supervisor	5
Judge Assistants		Technical Supervisor	5
Tours			
Tour Guides	Logistics Chair	Activities Supervisor	4
Social			
Social Assistants		Activities Supervisor	
Miscellaneous			
Conference/Hotel Liaison	Marketing & Publicity Chair	Hospitality/Accommodations Supervisor	1
Conference/Travel Liaison		Transportation Supervisor	1



Event/Task	Lead Coordinator	Point of Contact	# of People
General Support		Chair	10
Transportation to Dinner	Logistics Chair	Transportation Supervisor	4
Total Support (Saturday):			60

Milestones

Table 8 below shows the conference tasks that need to be completed by specific dates and the responsible committee/person.



Table 8: Milestones from Announcement of Conference to Post-Conference

Task	Responsible Committee/Person	Deadline
November 2023		
Notification of 2024 Conference	N/A	11/15
Notify department and School of Engineering	Chair	11/15
Update milestones with lessons learned	All	11/18
Finalize conference committee	Chair/Vice Chairs	11/20
Contact ANS National for support with hotel reservations	Logistics	11/22
Set up Baking Through UNM Index Program	Chair/Financial	11/24
Finalize conference dates	Chair/All	11/24
December 2023		
Finalize facilities reservations	Logistics	12/1
Finalize Logo Design	Marketing & Publicity	12/22
Begin designing app, prepping site, and other social media	Marketing & Publicity	12/22
January 2024		
Set up and confirm meeting schedule	Chair/Vice Chairs	1/5
Launch social media plan	Marketing & Publicity	1/12
February 2024		
Finalize list of potential speakers	Technical	2/16
Finalize technical topics	Technical	2/16
March 2024		
Contact speakers and presenters	Technical	3/1
Create sponsor letters and contact	Chair/Vice Chairs	3/22
April 2024		
Attend Student Conference at Penn State	All	4/4-4/6
Request lessons learned from Penn State	Chair/Vice Chairs	4/6
Prepare tour opportunities	Logistics	4/19
May 2024		
Submit progress report to SSC	Chair/Vice Chairs	5/17
Create a Call for Papers	Technical/Marketing & Publicity	5/17
June 2024		
Attend National Conference in Las Vegas	All	6/9-6/12
July 2024		
Confirm with all speakers and presenters	Technical	7/5
Report on sponsorship	Financial	7/12



2025 ANS Student Conference Proposal



Task	Responsible Committee/Person	Deadline
Reassess budget with sponsorship and cost information	Financial	7/17
August 2024		
Update with sponsors	Financial	8/2
Submit second progress report to SSC	Chair/Vice Chairs	8/16
September 2024		
Updates on conference and paper submission deadlines	Chair/Vice Chairs, All	9/6
Finalize gift bag orders (t-shirts, mugs, etc.)	Logistics	9/13
October 2024		
Confirm hotel registration group rates and contracts	Logistics	10/11
Registration opens	Financial, All	10/25
Create and test online paper submissions	Technical	10/25
November 2024		
First call for papers and posters	Technical	11/8
Attend Winter Meeting in Orlando, FL	All	11/17-11/21
Finalize Marketing Material	Marketing & Publicity	11/22
Report on sponsor engagement and Winter Meeting	Financial, All	11/22
December 2024		
Reassess budget	Financial	12/6
Update app and website	Marketing & Publicity	12/13
Third progress report to SSC	Chair/Vice Chairs	12/13
First paper deadline – send to reviewers	Technical	12/27
January 2025		
Confirm all judges, panelists, and speakers	Technical	1/10
Return paper reviews, one week for revisions	Technical	1/10
Receive final papers, organize tracks	Technical	1/17
Finalize tours	Logistics	1/17
Recruit student volunteers	Logistics	1/24
Confirm meals and transportation	Logistics	1/24
Finalize program	Marketing & Publicity	1/24
Finalize awards	Technical	1/31
February 2025		
Print programs	Marketing & Publicity	2/7
Order gift bag items	Logistics	2/7
Finalize budget	Financial	2/14



2025 ANS Student Conference Proposal



Task	Responsible Committee/Person	Deadline
Finalize website	Marketing & Publicity	2/14
Finalize staff schedule	Logistics	2/21
Submit final progress report to SSC	Chair/Vice Chairs	2/28
March 2025		
Prepare gift bags, print tags, and banners	Logistics, All	3/14
Contingency Weeks	All	3/17-3/28
April 2025		
Host ANS Student Conference 2025	All	4/3-4/6
Return seed money	Financial	4/11
Process student travel reimbursements	Financial	4/18
Finalize financial report	Financial	4/18
Submit lessons learned to next student conference host	Chair/Vice Chairs	4/18
Submit conference report	All	4/18

Budget & Finance

Attendance Projection

We are projecting 100 professionals and 600 students to attend the conference. Our quotes are cited for 700 total conference attendees. This projection is based on what previous years have seen for conferences, as well as what nominal projections versus actual attendance has been in past conferences. A projection of 700 allows some room for conservatism. Most recently, the student conference at the University of Tennessee, Knoxville, garnered about 700 conference attendees. Past attendance and projection data can be seen below in Table 9.

Table 9: Projected Attendance Based on Previous Conferences

Host	Students	Professionals
Texas A&M	380	87
University of Wisconsin, Madison	438	118
University of Pittsburgh	441	127
University of Florida	369	79
Virginia Commonwealth University	305	103
North Carolina State University (virtual)	466	121
Projection	600	100

Revenue

Our committee has decided to take a conservative approach to revenue planning. In the event we generate less revenue than we expect with a liberal approach, we can still meet appropriate expenditures. We have also compared our revenue planning with past student conference proposals and have reached out to previous committee chairs to establish a reference point for “reasonable” revenue numbers. In these conversations, we have set a student registration of \$40.00 and a professional member registration of \$250.00, which we believe is reasonable for our expected expenditures and rising cost of services in Albuquerque.

Based on the central placement of the University of New Mexico with other nuclear engineering programs and nuclear industry, we believe that sufficient sponsorship is possible. With the registration, sponsorship, and seed money from ANS National, we believe these goals are not only reasonable, but quite achievable.



Table 10: Revenue Based on Registrations and Sponsorships. Divisions donation is an estimate based on conversations with past conference chairs.

Registration							
Type	Unit Cost	Quantity			Projected Total		
		Avg	Min	Max	Avg	Min	Max
Student	\$40.00	600	580	620	\$24,000	\$23,200	\$24,800
Professional	\$250.00	100	80	120	\$25,000	\$20,000	\$30,000
Subtotal:					\$49,000	\$43,200	\$54,800

Sponsorship		
Tier Cost	Quantity	Projected Subtotal
\$30,000	1	\$30,000
\$15,000	3	\$45,000
\$10,000	5	\$50,000
\$5,000	6	\$30,000
\$2,500	10	\$25,000
\$1,000	15	\$15,000
Divisions Donations		\$30,000*
Subtotal:		\$225,000

Revenue Total		
Average	Minimum	Maximum
\$274,000	\$268,200	\$279,800

Expenses

A breakdown of all foreseen expenses is shown in Table 11 below. All financing below will be based on our primary choices for conference organization and execution. We have chosen relatively conservative expense metrics, such as assuming nearly every conference attendee will attend every single dinner, maximum transportation needs, and high social costs.

Facilities costs (the UNM Student Union Building, the ABQ BioPark, and the National Nuclear Museum) are given based on quotes and available pricing documents (see Appendix B for further details). The UNM SUB offers discounted rates for UNM student organizations, so the rate reflected in “UNM SUB Full” as \$871.50 an hour reflects a booking of all event space in the SUB except for the theater. The ABQ BioPark cost reflects the pricing for the “Plaza, Festival Greens, Ceremonial Garden & Spanish Moorish Garden” option. The National Nuclear Museum cost includes the museum space, seven security personnel (as required by the museum), a \$150 set-up charge, and a ten percent discount offered to our group.

Dinner costs (UNM Food, ABQ BioPark catering, and Little Anita’s) are given based on direct quotes (see Appendix B). The total catering cost is given for UNM Food and Little Anita’s, while the ABQ



BioPark catering is estimated by the approximate cost per plate. The ABQ BioPark catering minimum is met.

Transportation costs are given based on pricing from UNM Parking and Transportation Services. While they were unable to provide an official quote for 2025, they communicated to us that we should use the hourly rate for their shuttle service. Importantly, they also emphasized that they would have the capacity to service an event like ours, including drivers, fleet size, and other logistics.

Social costs for the “Trivia and Tea” night and the 1922 Social are given as estimates for the cost of goods and use of space.

We will also assume a total student travel reimbursement of \$100,000. Due to the increasing cost of travel, recent student conference attendees have requested greater use of the student travel reimbursement. Further, since travel to Albuquerque is more expensive for students than most recent conference venues, we want to make the student conference accessible to as many attendees as possible. Miscellaneous costs have also been included, including the waived registrations from sponsorships.

Our total projected conference expenses come to \$239,106. This is well below our average revenue total of \$274,000. However, we expect that our quoted costs will increase as we plan for the conference. Some vendors were hesitant to provide quotes because they felt that they could not give an accurate cost estimate for goods and services a year and half out. Thus, we feel that providing a margin between our revenue and expenses will better prepare us for any unexpected price hikes.

Table 11: Projected Conference Expenses, Asterisks Indicate Full Quoted Price

Item	Unit Cost	Thu.	Fri.	Sat.	Total
Facilities					
UNM SUB Grand Ballroom	\$472.50	3	-	-	\$1,417.5
UNM SUB Lobo A & Lobo B	\$70.00	9	-	-	\$630
UNM SUB Full	\$871.25	-	10	10	\$17,425
ABQ BioPark	\$5,000*	-	1	-	\$5,000
Nuclear Museum	\$3,492*	-	-	1	\$3,492
Dinners					
UNM Food	\$36,343*	1	-	-	\$36,343
ABQ BioPark Catering	\$26	-	700	-	\$18,200
Little Anita's	\$8,778.05*	-	-	1	\$8,778.05
Transportation					
Rotating Hotels/SUB	\$70	3 (9h)	5 (9h)	5 (9h)	\$8,190
Rotating Hotels/Dinners/Socials	\$70	5 (4h)	5 (4h)	5 (4h)	\$4,200
Sandia Tour	\$70	1 (4h)	-	-	\$280
Kairos Tour	\$70	1 (4h)	-	-	\$280
Los Alamos Tour	\$70	1 (8h)	-	-	\$560
Nuclear Museum Tour	\$70	1 (4h)	-	-	\$280
Socials					
Trivia and Tea	\$1,000	1	-	-	\$1,000
1922 Social	\$2,000	-	1	-	\$2,000
Museum Social	\$1,500	-	-	1	\$1,500
Miscellaneous					
Student Reimbursement	\$100,000	1	-	-	\$100,000
Shirts/Grab Bag Items	\$10,000	1	-	-	\$10,000
SSC Refreshments	\$500	-	1	-	\$500
Certificates	\$30	1	-	-	\$30
Programs	\$1,000	1	-	-	\$1,000
Mobile App	\$2,500	1	-	-	\$2,500
Awards, Gifts, and Incidentals	\$2,000	1	-	-	\$2,000
Waived Registrations	\$250	54	-	-	\$13,500
Total:					\$239,106

Financial Contingencies

As described above, some of the projected expenses may increase as we approach the conference dates. Further, we may not be able to meet our expected revenue goals, such as receiving less registrations or sponsorships than expected. Thus, we note some changes we could make that would reduce the expenses of our conference:

1. We can select the most inexpensive UNM Food option for catering at the Thursday dinner. Instead of a plated dinner with three options, we could select the “Little Italy” buffet style dinner. This would reduce our expenses by **\$6,560**.



2. Additionally, we could remove the cash bar for the Thursday dinner. This would reduce our expenses by **\$6,600**.
3. We could limit the number of spaces we'd book in the UNM Student Building. While they are provided to us at an inexpensive rate, we could reduce our space use by 25% and save about **\$4,350**.
4. We could work with UNM Parking and Transportation Services to reduce shuttle use during midday, when we expect most people to already be at the UNM SUB. If we assume a 2-shuttle reduction over 4 hours (11 am – 3 pm), this would reduce our expenses by **\$560**.
5. We could reduce the student reimbursement to reflect previous student conference reimbursements, which could be a reduction of up to **\$20,000-\$30,000**. However, as discussed earlier, we think increasing this expense is important and would like to save this as a last measure in our financial contingencies.

Overall, if all cuts were made, we'd see a reduction in expenses of up to **\$48,070**.

Sponsorship & Fundraising

Our donor tiers are named for famous scientists in nuclear engineering and science. We felt that they are the “Old” that support the growth of the “Nu.” This was our way of paying homage to them and acknowledging their contributions to the field of nuclear science. Table 12 lists the donor levels and their associated benefits.

Table 12: Donor Levels and Associated Benefits

Donor Tier	Donor Level	Benefits
\$30,000	J. Robert Oppenheimer	<ul style="list-style-type: none"> • Full page ad in the conference program • Large logo on conference t-shirt • Logo on PowerPoint template slides • Award ceremony sponsorship • Technical track sponsorship • 5 waived registrations
\$15,000	Marie Curie	<ul style="list-style-type: none"> • Half page ad in the conference program • Large logo on conference t-shirt • Poster session sponsorship • Dinner sponsorship • 4 waived registrations
\$10,000	Lisa Meitner	<ul style="list-style-type: none"> • Half page ad in the conference program • Medium logo on the conference t-shirt • Social sponsorship • 3 waived registrations
\$5,000	Erwin Schrödinger	<ul style="list-style-type: none"> • Quarter page ad in the conference program • Small logo on the conference t-shirt • Panel/technical session sponsorship • 2 waived registrations
\$2,500	Chien-Shiung Wu	<ul style="list-style-type: none"> • Donor/company name listed in conference program • Career fair table (if donor is a company or university) • 1 waived registration
\$1,000	Niels Bohr	<ul style="list-style-type: none"> • Donor/company name listed in conference program.

Banking & Oversight

The University of New Mexico has a series of accounts for student organizations, departments, and other unrestricted accounting needs. The UNM ANS Student Organization has an account set up through UNM which allows unrestricted deposits and unrestricted withdrawals. The term “unrestricted” simply means that the money can be deposited from any source and be used for any vendor or service. UNM ANS has used these accounts through UNM for over a decade, which has allowed us to build strong, functioning relationships with our accountant and student government accounting office. This would allow for the easiest influx and management of funds.

UNM is a tax-exempt institution in the state of New Mexico. As ANS National is a general not for profit corporation, the tax exemption status is not a foreseen hurdle to overcome in this process.

Financial integrity is of the utmost importance. Diligent oversight will be necessary for all transactions during this event. To access money from the account, the Financial Chair will oversee disbursing money for respective quotes and invoices. An approval from the Chair will be required to sign off on any purchases made. During each meeting of the conference planning committee, the Financial Chair will



give an update of expenditures and will keep a digital log with track changes enabled, which will be made available to ANS National and the Student Sections Committee upon request.

Cost of Attendance & Reimbursement

Since the University of New Mexico is relatively far from many universities on the East Coast, we understand that flight costs may be more expensive than students are used to with other conferences. We chose median cost flight costs to make average cost projections. Based on these costs, we have projected maximum and minimum costs of attendance.

The maximum cost projection includes a student attendee flying on a relatively expensive flight, staying for four nights at The Clyde Hotel in their own room, and purchasing relatively expensive breakfast (~\$10) and lunch (~\$15) options every day.

The minimum cost projection includes a student attendee flying with a relatively inexpensive flight, arriving Thursday afternoon, sharing a room at The Clyde Hotel with three other individuals for three nights, participating in conference meals, and purchasing two inexpensive (~\$10) lunches.

The minimum and maximum cost projections can be seen below in Table 13.

Table 13: Student Cost Projections Based on Registration, Flight, and Food.

Expenditure	Minimum	Maximum
Hotel Room for Conference Duration	\$141.75	\$756.00
Round-Trip Flight Cost	\$400.00	\$800.00
Registration	\$40.00	\$40.00
Breakfast	\$0	\$30.00
Lunch	\$20.00	\$45.00
Total Cost	\$601.75	\$1671.00

The travel reimbursement is meant to help mitigate some — or all — of the cost of this travel. To be reimbursed, each student section will need to send an email with all required travel expenses for the conference. The e-mail sent should include the following information:

- Number of attending students
- Number of reserved hotel rooms and which hotel venue (i.e., did they use a group rated hotel?)
- Transportation to and from the conference (air/ground)
- Transportation during conference (i.e., did they use rideshare services?)
- Parking costs (excluding airport parking)

For reimbursements, receipts will be required for all travel expenses, including total cost and payment method information.

Once a student section has emailed us this information, a form will be sent for them to fill out and attach receipts to. We will require this form to be compiled and completed in one PDF document within two weeks (14 days) of the conference ending. The Finance Chair will then review the PDF document and, where appropriate, request corrections to be made. For forms requiring correction, student sections will



2025 ANS Student Conference Proposal



have one week (7 days) to make these corrections and return the form. Once all forms have been turned in, including those requiring corrections, we will turn in our master list to ANS National for reimbursement distributions. Checks will be mailed to each student section representative (President, Advisor, etc.).



Website and Social Media

Website

The UNM ANS Student Section currently maintains a website for normal operation of our Student Section (<https://unm-ans.weebly.com>). We advertise our upcoming meetings, long-term events, upcoming conferences, and past events and media on our website. As the 2025 student conference host, we will create a specific section on our website for conference attendees to access livestream links, presenter information (bios, LinkedIn, etc.), conference venue maps, an Albuquerque map, relevant transportation, presentation, and event schedules, contact information for the student conference committee, and more.

Social Media

Our Student Section maintains active Instagram (@ans.unm) and Twitter (@ans_unm) accounts. We would utilize these accounts to post highlights of events, presentations, and panels. We would also post event notifications to these platforms. We also plan to utilize the Crowd Compass Events app to post schedules, event notifications, and other relevant conference materials. The Crowd Compass Events app was used by ANS National during the 2023 ANS National Conference, and we felt that the app successfully conveyed information to conference attendees. We are also looking at GuideBook, which has been used at previous student conferences.



Liability

ANS Discrimination Policy

The University of New Mexico is a Minority Serving Institution (MSI), and the ANS Student Chapter believes in the fair treatment of all persons regardless of their age, color, creed, disability, ethnicity, gender identity and expression, marital status, military service, nationality, parental status, physical appearance, race, religion, sex, or sexual orientation. As such, we are committed to an inclusive conference for all. We will follow ANS National’s Respectful Behavior Policy. Each member at the conference is responsible for their own behavior, and any behavior that goes against ANS National’s Respectful Behavior Policy will not be tolerated by UNM ANS and all incidents will be reported to Ann Marie Gruszkowski. More information on this policy can be found at: <https://ans.org/about/rbp/>.

Release of Information

It is expected that personal information (including but not limited to names, addresses, credit card numbers, phone numbers, e-mails, and any other relevant identifying information) will be collected from conference attendees upon conference registration. It is imperative that personal information is protected. Information provided to secondary parties is not protected by the liability clause for the conference.

Conference attendees may be photographed and/or video recorded. By attending the conference, attendees agree to the release/use of their likeness in any publication or online post regarding the conference at UNM.

Disabilities

The University of New Mexico is an ADA compliant institution. From the University’s Office of Equal Opportunity: “The University shall make reasonable accommodation to the known physical or mental limitations of a qualified individual with a disability, unless the University can show that providing an accommodation would impose an undue hardship.” The ADA coordinators at UNM are Francie Cordova and Heather Jaramillo. More information on UNM’s ADA policy can be viewed here: <https://oeo.unm.edu/ada/>.

Registration will address whether an accommodation is needed. If an accommodation is needed, the UNM ANS Student Section will work with UNM’s Office of Equal Opportunity to ensure the accommodation is met by the time of the conference.

Alcohol

The use of alcohol at events must be within the guidelines of the University of New Mexico’s Administrative Policy (UAP) 2140. 2140 states the following:

“Alcohol may be used at receptions or other hospitality events sponsored by a University department or other unit when (1) approved by the University President or designee in advance, in writing, and (2) served by a licensed alcohol server. Events of this type should normally involve special guests of the University or otherwise be a non-routine occurrence, such as a reception for visiting dignitaries or a reception in connection with an academic conference. The



function must be by invitation only and held in a location that can reasonably be closed to the public.”

UNM ANS will work closely with event staff to ensure proper enforcement of UAP 2140.

Hotels

The Clyde Hotel, Embassy Suites, and other selected hotels will be liable for hotel services. Conference attendees can request accommodations from each hotel venue and may work with UNM ANS to guarantee accommodations in conference venue space.

Transportation

Transportation liability will be incurred by UNM Parking and Transportation Services (PATS). Transportation will be available between scheduled conference events. Transportation information will be easily accessible through the Crowd Compass Events App and the conference program. UNM ANS does not claim liability for conference attendees that decide to travel to locations with rideshare services, ABQ Ride, and other transportation methods.

Banking & Expenses

UNM ANS claims liability for unpaid expenses. All expenditures must be approved by the Finance Chair and the Conference Chair/Vice-Chair. All receipts shall be saved, and a digital book shall be kept for all transactions. All contracts shall be reviewed prior to signing by the Finance Chair and Conference Chair/Vice Chairs.

Dining

Dining liability will be incurred by the respective venues, including UNM Food and other caterers. UNM ANS will attempt to arrange inclusive dining options, such as vegetarian, vegan, halal, dairy-free, and gluten-free meals, but makes no guarantee on availability unless conference attendees seek out prior arrangements.

Personal Injury, Property Damage, & Theft

UNM does not claim liability for damage to personal property or theft. The university and department claim responsibility for personal injury as per UNM policy 6150. Policy 6150 can be viewed here: <https://policy.unm.edu/university-policies/6000/6150.html>.



Appendix A: Conflicts Schedule

March 2025

Calendar

Sunday	Monday	Tuesday	Wednesday	Thursday	Friday	Saturday
Feb 23	24	25	26	27	28	Mar 1
2	3	4	5	6	7	8
University of Michigan Spring Break						
American Physical Society March Meeting						
9	10	11	12	13	14	15
Penn State, NCSU Spring Break						
16	17	18	19	20	21	22
UNM, UIUC, UTK, UW Madison, Purdue Spring Break						
23	24	25	26	27	28	29
OSU, UC Berkeley, Missouri S&T, MIT Spring Break						
13th International Conference on Methods and Applications of Radioanalytical Chemistry (MARC XIII)						
American Chemical Society Spring 2025						
				Conference Second Choice		
30	31	Apr 1	2	3	4	5
Conference Second Choice				Conference First Choice		

Appendix B: Quotes

THE CLYDE HOTEL



Date of Proposal: Thursday, August 10, 2023

Date Proposal Expires: Thursday, September 28, 2023

Michael Trombetta
University of New Mexico
American Nuclear Society
mtrombetta@unm.edu
RE: ANS National Student Conference

Dear Michael,

We would be delighted to host the **ANS National Student Conference**. We are in the heart of downtown and your attendees will have five-minute access to dining, shopping, and local attractions. In addition to the Hotel Albuquerque, I am pleased to offer you availability at the Clyde Hotel as well.

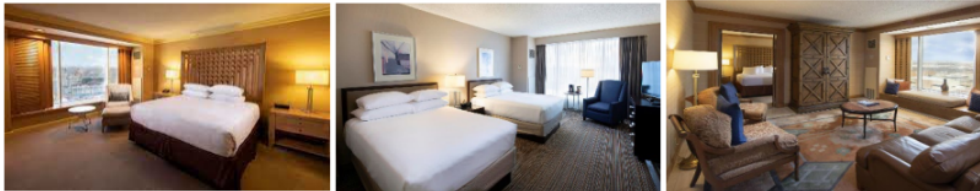
ABOUT THE CLYDE HOTEL

The Clyde Hotel offers the quintessential location for both business and leisure travelers. Make yourself at home in your spacious guestroom, explore the shops and events in our downtown neighborhood, or lounge at the pool between meetings. At our Albuquerque hotel, you will find that productivity and relaxation are constant during your time here. Each of our 382 hotel rooms, including 2 Presidential Suites, 5 Hospitality Suites, 5 Jr. Suites, 187 Kings and 189 Doubles, offer a wide array of amenities. The Clyde Hotel makes available to all guests' complimentary property-wide Wi-Fi internet access, outdoor swimming pool and state of the art fitness center, fully equipped business center and more than 25,000 square feet of elegant event space.

GUESTROOMS

The Clyde Hotel Rooms Offer the Following Amenities:

- Property Wide high-speed Wi-Fi internet
- Keurig single-cup brewer in guest rooms
- City or Mountain Views
- Blackout drapes
- Deluxe bedding
- Full baths with tub and shower
- Cable/satellite TV
- Work desk
- Wake-up calls
- Full bath amenities
- Rollaway beds available upon request
- Room service (6am - 11pm)
- Electronic/magnetic keys
- Iron/ironing board
- Massage - available in room
- Non-smoking hotel and guest rooms
- Voicemail messaging
- Connecting rooms available upon request
- Pack 'n Play available.
- Valet laundry service



2025 GROUP ROOM BLOCK

	Thurs	Fri
	4/3	4/4
Run of House	300	300

Rates: \$189.00

*The rates shown are per night and subject to the other provisions of this agreement. Rates are non-commissionable and exclusive of state and local taxes. The hotel on a space available and rate available basis will accept sleeping rooms requested on dates other than those listed above. Current Room Tax: 15.750% (subject to change).

3D TOUR OF GUEST ROOMS:

[Plaza View King](#)

[Plaza View Double](#)

[Sandia View King](#)

[Sandia View Double](#)

[The Dealmaker King](#)

[The Councilman Suite](#)

[The Mayor Suite](#)

AMENITY FEE:

The Hotel will assess a \$25 per night Amenity Fee of which includes local and toll-free telephone calls, wireless internet access in your guest room and public spaces, access to the pool and fitness center, daily bottled water, coffee, and tea provided in your guest room, and self-parking. Valet parking is available for a nominal \$10 per night surcharge. Parking is based on availability and unavailable to oversized vehicles.

CONCESSIONS

- 1/50 Complimentary – Cumulative
- Complimentary use of Health Club
- (5) Upgrades at the Group Rate
- (5) VIP Amenities (\$25 value)
- \$5 Discount on Parking
- \$5 Discount on Amenity Fee
- Complimentary Internet Access in Guest Rooms, Meeting Rooms, and Public Areas



FOOD AND BEVERAGE MINIMUM

All food and beverage prices are subject to a 23% service charge and a 7.750% state tax (subject to change without notice). Please note that the service charge is taxable.

- Average Breakfast: \$28-\$42
- Average Breaks: \$16
- Average Lunch: \$38-\$48
- Average Dinner: \$56-\$95



2025 ANS Student Conference Proposal



Ricky Chavez
Sales Manager
2101 Louisiana Blvd.
Albuquerque, NM 87110
(505) 837-6656



Greetings from the “Land of Enchantment”! The staff and management of the **Marriott Albuquerque** are excited at the opportunity of hosting your upcoming events with the, **American Nuclear Society – APR2025**. We are committed to making your event the best to date. Based on your request for proposal, your program will be a perfect fit in our hotel! Not only can we offer you a competitive rate that meets your budget; we can also offer you ample meeting space and award winning service. At the Marriott Albuquerque, it is the unexpected touches that will make any stay an event to remember.



For years, the Marriott Albuquerque has been committed to providing a clean, safe and comfortable environment for our guests. That commitment has not changed, however the way we accomplish this has. As we continue to welcome guests after Covid-19, we realize the environment is ever changing. The hotel staff has and will continue to undergo training on Marriott’s commitment to clean standards. Along with best practices regarding food handling, social distancing and local and federal regulations.

As meeting and travel planning beginning to start back up, there is nothing more important than solid line of communications between our staff and our planning partners. As we continue through the phased reopening throughout the country, meeting planning and detailing will be very precise. The staff here at the Marriott Albuquerque is prepared to work with you on the best possible options for each individual event.

Location: The Marriott Albuquerque is located in the Uptown Business and Shopping area of Albuquerque. Within walking distance is New Mexico’s largest shopping mall, Coronado Shopping Center, the stylish ABQ Uptown Outdoor Mall, the most updated **Wiprock** Shopping Center and restaurants such as Red Robin, Bucca Di Beppo, Weck’s, Elephant Bar & Restaurant, Bravos, California Pizza Kitchen, Ruth’s Chris Steak House, Jason’s Deli, B.J.’s, Genghis Grill, Garduno’s New Mexican Restaurant, Subway, Firehouse Subs, Takumi, Sauce and Japanese Kitchen. Our restaurant, Cielo Sandia, offers an array of contemporary American Cuisine.

Hotel Accommodations: The Marriott Albuquerque has completed the transformation of our 411 guest rooms. Featuring stylish new Décor, flat screen high definition televisions equipped with connectivity boxes, wireless internet in all of our 411 guest rooms, and the completion of our state of the art fitness facility, has made the Marriott Albuquerque the most up-to-date hotel in the Albuquerque area. We are confident that your group will truly appreciate the finest accommodations that Albuquerque has to offer.

**We currently have “Room Blocks” available for the following dates:
Thursday, April 3, 2025 – Saturday, April 2025**

<i>DAY</i>	<i>Thursday</i>	<i>Friday</i>	<i>Saturday</i>
<i>DATE</i>	<i>04.03.2025</i>	<i>04.04.2025</i>	<i>04.05.2025</i>
<i>ROOMS</i>	<i>135</i>	<i>135</i>	<i>135</i>

Special Rate: Understanding that hotel rates are one of your top considerations, we are pleased to offer you a confirmed discounted rate of **\$159.00 withOUT Breakfast –OR– \$189.00 WITH Breakfast**. Our current selling rate \$254.00. This rate is non-commissionable and does not include state or local taxes, currently 15.75%.

“Room Blocks” are based on **Attrition** meaning that You/Account are responsible for filling up to 80% of the given room block, with understanding the hotel will allow an allowance of 20% reduction/slippage of room nights without penalty.

****Details of Attrition will be outlined in Contract Agreement****



2025 ANS Student Conference Proposal



Spacious Event Facilities: With over 17,000 square feet of flexible event space located all on one level, the Marriott Albuquerque, can comfortably accommodate your General Session, Breakouts and Meals. I have enclosed an Event Room Diagram so you may better visualize how your program will look in our hotel.

Date	Start Time	End Time	Function	Setup	# of People
04/03/2025			Breakfast		
04/03/2025	8:00 AM	5:00 PM	Conference	Theater	600
04/03/2025			Lunch		
04/03/2025			Dinner		
04/04/2025			Breakfast		
04/04/2025	8:00 AM	5:00 PM	Conference	Theater	600
04/04/2025			Lunch		
04/04/2025			Dinner		
04/05/2025			Breakfast		
04/05/2025	8:00 AM	5:00 PM	Conference	Theater	600
04/05/2025			Lunch		
04/05/2025			Dinner		

Audio Visual Equipment: Our experienced staff has extensive knowledge in Audio Visual. Our staff will assure you first class presentation both quickly and efficiently.

➤ **Hotel will Charges Onetime Setup Fee \$12,500.00++ per Day.**

The following will be included

MEETING PACKAGE per Day includes –

- TWO(2) – Projector Screen and LCD Projector, with
 - Wireless Microphone, Podium, House Sound
- Standard-WIFI Access in Function & Meeting Space (All-Day)

Hotel Concessions offered –

- * Complimentary – Self-Parking, including overnight Self-Parking
- * Complimentary – Access to our Indoor/Outdoor Pool (16 years & up)
- * Complimentary – Standard-High Speed Wireless Internet access to Guest Rooms
- * Complimentary –Use of our state-of-the-art Fitness Center with 24–Hour access
- * TWO(2) – Room Upgrades with access to *Club Level Lounge* for Event Planner & assigned Guest
- * 12:00PM – Late Check Out Day of Departure for Group Block; *If Individual’s require Late Check Out beyond time set, then Half-Day Rates Charges (1/2 Day Rate) will apply for Individual Reservations.*

Superb Meal Functions: Our experienced staff has extensive knowledge in creating exciting food and beverage functions. Our staff will assure you first class presentation both quickly and efficiently.

****Please keep in mind that our Executive Chef would be happy to create menus that fit within your specified budget****

We look forward to having the opportunity of partnering with you, and creating a successful and memorable event.

WE WANT YOUR BUSINESS!!

Please do not hesitate to contact me with any questions or if you would like to hold space at our hotel. My direct line is (505) 837-6656 and my email address is Ricky.Chavez@MarriottSales.com

Sincerely,

Ricky Chavez
Sales Manager



2025 ANS Student Conference Proposal



Albuquerque Downtown

Embassy Suites by Hilton Albuquerque
1000 Woodward Place NE
Albuquerque, NM 87102
USA
Tel: +1-505-245-7100



August 11, 2023

Dear Michael,

RE: UNM American Nuclear Society

Thank you for considering Embassy Suites by Hilton Albuquerque for your upcoming event. Surrounded by local shopping, dining, entertainment and culture, our convenient location sets the stage for success. Each of our guest rooms are thoughtfully designed and efficiently planned, while our adaptable function space and sincere hospitality are designed with your convenience and comfort in mind. Whether you are planning a meeting, hosting a conference or entertaining executives, you will find everything necessary for a pleasant and productive experience.

Sincerely,

V. Michelle Roybal

V. Michelle Roybal
Director of Sales and Events
Embassy Suites by Hilton Albuquerque
Phone : 505-353-5364
Email: michelle.roybal@atriumhospitality.com



2025 ANS Student Conference Proposal



PROPOSAL PREPARED FOR: UNM AMERICAN NUCLEAR SOCIETY

Room Block		UNM American Nuclear Society 04/03/2024 - 04/06/2024					
Room	Wed 04/03/2024		Thu 04/04/2024		Fri 04/05/2024		Total
1 KING BED SUITE							
Single	100	\$ 149.00	100	\$ 149.00	100	\$ 149.00	300
Daily Total	100		100		100		300
Total Number of Rooms:							300

CONCESSIONS:

- COMPLIMENTARY FULL HOT COOKED TO ORDER BREAKFAST DAILY
- COMPLIMENTARY EVENING RECEPTION WITH SNACKS AND BEVERAGES
- WAIVED INTERNET IN GUESTROOMS
- (1) COMPLIMENTARY GUESTROOM PER EACH 50 CONSUMED

ALL GUESTROOMS ARE NEWLY RENOVATED AND ARE 2 ROOM SUITES WITH A MICROWAVE, REFRIGERATOR AND WET BAR

Estimated Costs

Room Cost Overview	Total
Guestrooms	\$ 44,700.00
Tax (13.87%)	\$ 6,199.89
Total	\$ 50,899.89



September 28, 2023

Michael Trombetta
American Nuclear Society- National Student Conference
2700 Campus Blvd NE
Albuquerque, NM 87106
(708) 829-3151
mtrombetta@unm.edu

Dear Mr. Trombetta,

Welcome to the Land of Enchantment!!! The staff and management of The Sheraton Albuquerque Airport Hotel are **very excited** at the opportunity of hosting **American Nuclear Society’s Room Block** in April, 2025. We are committed to making your groups stay the best to date. Based on your request for proposal, we feel your group will be a perfect fit in our hotel! Not only can we offer you a competitive rate that meets your guest needs; we can also offer you ample meeting space and award winning service. At the Sheraton Albuquerque Airport Hotel it is the unexpected touches that will make any stay an event to remember.

We have completed a \$14 million dollar renovation from our head to toe! With our beautiful new look, our prime location, and dedicated staff, your staff will enjoy your event more than ever! The **Sheraton Albuquerque Airport Hotel** is located at the entrance of Albuquerque International Sunport, the hotel stands at the highest point in the city, boasting dramatic views of the Sandia Mountains and the city’s glittering skyline. There are multiple restaurants are within walking distance and we are just minutes from the Historic Old Town Plaza, the ABQ Uptown shopping and dining district, Nob Hill and downtown Albuquerque. Our hotel is also conveniently located just a few miles from Albuquerque’s most popular attractions including the University of New Mexico Championship Golf Course.

SETTLE & ENJOY

Our 276 guest rooms and suites offer the comfort and convenience you’re looking for, complete with the famously plush Sheraton Sweet Sleeper® Bed. Enjoy Bliss® bath amenities, in-room dining, daily valet service and high speed internet access in all guestrooms. Plus, our rooms are completely smoke-free, so you can rest easy. We look forward to making you feel comfortable and connected.

GUEST SERVICES

Stay in touch with what matters in our renovated lobby hub featuring high speed internet access, PC workstations, and free printing. Complimentary 24 hour shuttle service is available to and from the airport.

**We currently have meeting space and guestrooms on your preferred dates of:
April 3-5, 2025**

2910 Yale Blvd. SE, Albuquerque, NM 87106
P: 505-244-8558 F: 505-246-8188



GUESTROOM RATES

Understanding that hotel rates are one of your top considerations, we are pleased to offer you the following confirmed rates:

Room	Single/Double
King and Queen/Queens	139.00

These rates are non-commissionable and do not include state or local taxes, currently 15.625% (subject to change without notice).

GUEST ROOM BLOCK

	THU 4/3/2025	FRI 4/4/2025	SAT 4/5/2025
Single/Double	125	125	125

Total Guest Rooms Nights: 375

CONVENTION SERVICES

Should the *Sheraton Albuquerque Airport Hotel* be selected, a member of our Convention Services Team will be working closely with you to finalize all details with guestroom needs, meeting room specifications and any other important requests.

Special Concessions Offered

- Complimentary airport shuttle
- Complimentary parking in our secured parking lot
- Complimentary internet in our guestrooms

Michael, we appreciate the opportunity to present this proposal to you. Should you have any questions, please call me at (505) 843-7000 ext. 1156. The Sheraton Albuquerque Airport Hotel staff and management look forward to being your hotel of choice!

Yours in Hospitality,

Clarissa Sedillo
Director of Sales
Sheraton Albuquerque Airport Hotel
Clarissa.sedillo@sheratonabqairport.com

2910 Yale Blvd. SE, Albuquerque, NM 87106
P: 505-244-8558 F: 505-246-8188



2025 ANS Student Conference Proposal



UNM Food
 1 University of New Mexico MSC 03-2200 Bldg 60 Room 1092
 Albuquerque NM USA 87131
 505.277.2506
 UNMCatering@compass-usa.com



Customer: 4641 Kevin Garcia

Master Invoice #489 | Conference 2025
 Created: 08/09/2023

	Master Invoice Total	Payments	Refunds	Balance Due
Totals	\$98,009.00	\$0.00	\$0.00	\$98,009.00



American Nuclear Society Student Conference

Invoice ID	Event Date	Name	Status	Pay Method	Total	Payments	Refunds	Balance Due
32566	04/03/2025	American Nuclear Society Student Conference	Confirmation Pending	Invoice to Index Code	\$36,343.00	\$0.00	\$0.00	\$36,343.00

Customer Information

First Name: Kevin
 Last Name: Garcia
 Department: School of Engineering
 Email: kgarcia007@unm.edu
 Phone: 813.650.5321
 Tax Exempt : True
 Exempt Info: 85-6000642

Delivery / Pickup Information

Method: Delivery in Student Union
 How did you hear about us?: Unknown
 Event Contact: Kevin & Ethan Krammer - ekrammer@unm.edu - 702.622.8986
 Quote Only?: Yes
 Contact Phone: 702.622.8986
 : kgarcia007@unm.edu
 Building: SUB
 Event Location: Ballrooms A, B & C
 Serviceware Option: China - plated dinner

Payment Information

Payment Type: Invoice to Index Code

Event Information

Guest Count: 700
 Pick-up/ Delivery Date: Thursday, 4/3/2025
 Food Ready By - Internal Use Only: 5:30 PM
 Food Delivery Time: 6:00 PM
 Food Service Begins: 6:30 PM
 Event Clean-Up Time: 8:30 PM

FOOD	Qty.	Price	Ext.
<p>Plated Dinner</p> <p>Seated dinners are served with your choice of first course, entrée, desserts, a dinner roll and butter, iced tea/iced water and coffee/decaf service.</p> <p>The minimum order quantity for a plated meal is 15 people. Please refer to the "Guest Count" section of our policy page for more information and surcharges.</p> <p>Market Price</p> <p>My Event will be located in the Student Union Building</p>	350	\$43.99	\$15,396.50
<p>Mixed greens salad with romaine, red onions, tomatoes, croutons, and creamy ranch dressing & Balsamic dressing on the tables</p> <p>Chicken Picatta with Chef's Choice of Veg & Starch - Contains Dairy & Gluten</p> <p>Chocolate Flourless Cake & Berry Trifle Alternating on Tables</p>			
<p>Plated Dinner</p> <p>Seated dinners are served with your choice of first course, entrée, desserts, a dinner roll and butter, iced tea/iced water and coffee/decaf service.</p> <p>The minimum order quantity for a plated meal is 15 people. Please refer to the "Guest Count" section of our policy page for more information and surcharges.</p> <p>Market Price</p>	300	\$41.99	\$12,597.00



My Event will be located in the Student Union Building

Mixed greens salad with romaine, red onions, tomatoes, croutons, and creamy ranch dressing & Balsamic Dressing on the tables

Flame Kissed Flank Steak with Chimichurri Sauce Served with Chef's Choice Starch & Veg- Gluten & Dairy Free

Chocolate Flourless Cake & Berry Trifle Alternating on Tables

Plated Dinner

Seated dinners are served with your choice of first course, entrée, desserts, a dinner roll and butter, iced tea/iced water and coffee/decaf service.

The minimum order quantity for a plated meal is 15 people. Please refer to the "Guest Count" section of our policy page for more information and surcharges.

Market Price

My Event will be located in the Student Union Building

50 \$34.99 \$1,749.50

Mixed greens salad with romaine, red onions, tomatoes, croutons, and creamy ranch dressing & Balsamic Dressing on the tables

Grilled Vegetable & Polenta Cake Stack - Served with Chef's Choice Starch & Veg - Vegan, GF, & DF

Chocolate Flourless Cake & Berry Trifle Alternating on Tables

ALCOHOL	Qty.	Price	Ext.
Cash Bar			
Mocktails Available at the Bar -			
Sandia Sunrise - Orange juice, sparkling white wine, and grenadine			
Crisp Apple Sangria - Red wine blend, apples, citrus & sparkling soda			
Cash Bar Service			
\$225.00 bar set-up fee.	6	\$225.00	\$1,350.00
Cash Bar service fee reduced to \$100 should Bar sales exceed \$300.			
Includes one bartender for 2 hours of service for up to 100 guests. For additional hours or guests the charge will be \$40 for each additional hour per bartender. Includes Bar table covering, ice and all necessary disposable ware for bar service. Glassware available upon request.			
Custom Item			
Drink Tickets - 1 per person @\$7.50 each			
	700	\$7.50	\$5,250.00

SERVICE ITEMS	Qty.	Price	Ext.
Linen - 90x90			
70 - Red 90x90 Linens on Table			
700 White Linen Napkins			
	70	\$0.00	\$0.00



2025 ANS Student Conference Proposal



Order Summary			
Food	Alcohol	Service Items	
\$29,743.00	\$6,600.00	\$0.00	Order Totals
Any service/staffing/administrative charges above are charges for the --administration of the function and are not purported to be a tip or gratuity and will not be distributed as a tip or gratuity to the employees who provided service to the guests.			Sub Total
			Order Total
			Balance Due
			\$36,343.00
			\$36,343.00
			\$36,343.00

Special Instructions

National American Nuclear Society will be overseeing

Bidding on Conference - Will know October 1st,2023

Subject to price increase of up to 10%- JL



American Nuclear Society Student Conference

Invoice ID	Event Date	Name	Status	Pay Method	Total	Payments	Refunds	Balance Due
32568	04/03/2025	American Nuclear Society Student Conference	Confirmation Pending	Invoice to Index Code	\$29,783.00	\$0.00	\$0.00	\$29,783.00

Customer Information

First Name: Kevin
 Last Name: Garcia
 Department: School of Engineering
 Email: kgarcia007@unm.edu
 Phone: 813.650.5321
 Tax Exempt : True
 Exempt Info: 85-6000642

Delivery / Pickup Information

Method: Delivery in Student Union
 How did you hear about us?: Unknown
 Event Contact: Kevin & Ethan Krammer - ekrammer@unm.edu - 702.622.8986
 Quote Only?: Yes
 Contact Phone: 702.622.8986
 : kgarcia007@unm.edu
 Building: SUB
 Event Location: Ballrooms A, B & C
 Serviceware Option: Disposable N/C

Payment Information

Payment Type: Invoice to Index Code

Event Information

Guest Count: 700
 Pick-up/ Delivery Date: Thursday, 4/3/2025
 Food Ready By - Internal Use Only: 5:30 PM
 Food Delivery Time: 6:00 PM
 Food Service Begins: 6:30 PM
 Event Clean-Up Time: 8:30 PM

FOOD	Qty.	Price	Ext.
Little Italy- Caesar Salad - Build Your Own			
Garlic Bread - Make Vegan			
Little Italy is served with your choice of pasta and entrée.			
The minimum order quantity for this buffet is 20 people. Please refer to the "Guest Count" section of our policy page for more information and surcharges.			
Fettucine alfredo Chicken piccata	650	\$22.99	\$14,943.50
<ul style="list-style-type: none"> • Caesar salad • Fresh baked cookies • Fresh baked garlic bread • Iced tea • Iced water 			
Custom Item			
Vegan Italian Roasted Veggie Bowl with Quinoa & Balsamic Glace	50	\$22.99	\$1,149.50



ALCOHOL	Qty.	Price	Ext.
Cash Bar- All Plastic			
Mocktails Available at the Bar -			
Sandia Sunrise - Orange juice, sparkling white wine, and grenadine			
Crisp Apple Sangria - Red wine blend, apples, citrus & sparkling soda			
Cash Bar Service			
\$225.00 bar set-up fee.	6	\$225.00	\$1,350.00
Cash Bar service fee reduced to \$100 should Bar sales exceed \$300.			
Includes one bartender for 2 hours of service for up to 100 guests. For additional hours or guests the charge will be \$40 for each additional hour per bartender. Includes Bar table covering, ice and all necessary disposable ware for bar service. Glassware available upon request.			
Custom Item			
Drink Tickets - 1 per person @\$7.50 each			
	700	\$7.50	\$5,250.00

SERVICE ITEMS	Qty.	Price	Ext.
Linen - 90x90- First 10 Complimentary			
70 - Red 90x90 Linens on Table - Charge for 60 @\$7.50 =\$450	1	\$1,150.00	\$1,150.00
700 White Linen Napkins x \$1 = \$700			
Custom Item			
China Service @\$3 per person			
	700	\$3.00	\$2,100.00

LABOR	Qty.	Price	Ext.
Service Staff			
8 Buffets with Servers x 2 each			
16 Servers x 6 Hours each =96 Hours @ \$40 an hour	96	\$40.00	\$3,840.00

Order Summary					
Food	Alcohol	Service Items	Labor	Order Totals	
\$16,093.00	\$6,600.00	\$3,250.00	\$3,840.00	Sub Total	\$29,783.00
Any service/staffing/administrative charges above are charges for the --administration of the function and are not purported to be a tip or gratuity and will not be distributed as a tip or gratuity to the employees who provided service to the guests.				Order Total	\$29,783.00
				Balance Due	\$29,783.00

Special Instructions



American Nuclear Society Student Conference

Invoice ID	Event Date	Name	Status	Pay Method	Total	Payments	Refunds	Balance Due
32569	04/03/2025	American Nuclear Society Student Conference	Confirmation Pending	Invoice to Index Code	\$31,883.00	\$0.00	\$0.00	\$31,883.00

Customer Information
 First Name: Kevin
 Last Name: Garcia
 Department: School of Engineering
 Email: kgarcia007@unm.edu
 Phone: 813.650.5321
 Tax Exempt : True
 Exempt Info: 85-6000642

Delivery / Pickup Information
 Method: Delivery in Student Union
 How did you hear about us?: Unknown
 Event Contact: Kevin & Ethan Krammer - ekrammer@unm.edu - 702.622.8986
 Quote Only?: Yes
 Contact Phone: 702.622.8986 : kgarcia007@unm.edu
 Building: SUB
 Event Location: Ballrooms A, B & C
 Serviceware Option: China - plated dinner

Payment Information
 Payment Type: Invoice to Index Code

Event Information
 Guest Count: 700
 Pick-up/ Delivery Date: Thursday, 4/3/2025
 Food Ready By - Internal Use Only: 5:30 PM
 Food Delivery Time: 6:00 PM
 Food Service Begins: 6:30 PM
 Event Clean-Up Time: 8:30 PM

FOOD	Qty.	Price	Ext.
Custom Item			
Custom Item LTO Dinner- 8 Buffets with Servers			
BBQ Seitan with Red Chile BBQ Sauce-DF,Vegan - Chafer			
BBQ Chicken- Chafer			
Pulled Pork served with buns & pickles Basket & Bowl			
Garden Salad- Serve with Housemade Dressing- GF,DF,Vegan 2 Bowls each buffet			
Classic Vinaigrette Macaroni Salad - Large Bowl	700	\$25.99	\$18,193.00
Mexican Street Corn - Chafer			
Apple Crisp - Vegan - Chafer			
Iced Tea & Iced Water			



ALCOHOL	Qty.	Price	Ext.
Cash Bar- All Plastic Mocktails Available at the Bar - Sandia Sunrise - Orange juice, sparkling white wine, and grenadine Crisp Apple Sangria - Red wine blend, apples, citrus & sparkling soda			
Cash Bar Service \$225.00 bar set-up fee.			
	6	\$225.00	\$1,350.00
Cash Bar service fee reduced to \$100 should Bar sales exceed \$300. Includes one bartender for 2 hours of service for up to 100 guests. For additional hours or guests the charge will be \$40 for each additional hour per bartender. Includes Bar table covering, ice and all necessary disposable ware for bar service. Glassware available upon request.			
Custom Item Drink Tickets - 1 per person @\$7.50 each			
	700	\$7.50	\$5,250.00

SERVICE ITEMS	Qty.	Price	Ext.
Linen - 90x90- First 10 Complimentary 70 - Red 90x90 Linens on Table - Charge for 60 @\$7.50 =\$450 700 White Linen Napkins x \$1 = \$700			
	1	\$1,150.00	\$1,150.00
Custom Item China Service @\$3 per person			
	700	\$3.00	\$2,100.00

LABOR	Qty.	Price	Ext.
Service Staff 8 Buffets with Servers x 2 each 16 Servers x 6 Hours each =96 Hours @ \$40 an hour			
	96	\$40.00	\$3,840.00

Order Summary					
Food	Alcohol	Service Items	Labor	Order Totals	
\$18,193.00	\$6,600.00	\$3,250.00	\$3,840.00	Sub Total	\$31,883.00
Any service/staffing/administrative charges above are charges for the --administration of the function and are not purported to be a tip or gratuity and will not be distributed as a tip or gratuity to the employees who provided service to the guests.				Order Total	\$31,883.00
				Balance Due	\$31,883.00



ABQ BioPark Facility Rental Pricing

Aquarium

Shark Reef Café.....	\$750
Entire Aquarium.....	\$3,000
Partial Aquarium (Atlantic Coral Reef, Jellies/Sea Horses & Shark Tank only).....	\$2,500
Partial Aquarium (Jellies/Sea Horses & Shark Tank only).....	\$2,000

Botanic Garden

Ceremonial Rose Garden and Spanish Moorish Garden.....	\$2,500
Ceremonial Rose Garden and Shark Reef Café.....	\$3,000
Plaza.....	\$1,000
Plaza, Festival Greens, Ceremonial Garden & Spanish Moorish Garden.....	\$5,000
Japanese Garden Event.....	\$5,500
Japanese Garden (ceremony only) with High Desert Rose Garden & Atrium.....	\$6,000
High Desert Rose Garden and Atrium.....	\$3,500
BUGarium.....	\$1,200
Children’s Fantasy Garden.....	\$2,000

Zoo

Entire Zoo (entire facility including indoor areas).....	\$9,500
Partial Zoo (giraffes, elephants, polar bears, cat walk).....	\$6,000
Zoo Central (Central Parq, polar bears, cat walk).....	\$5,000
Africa (primates, hippos, zebras, painted dogs, hyena).....	\$3,500
Penguins.....	\$3,500
Backyard Bugs (Daytime).....	\$1,200
Add Bandshell.....	\$1,200

In addition to the rental fee, there is a catering minimum at each facility. Details will be discussed with The SSA Group.

Catering minimum at Aquarium & Botanic Garden: \$3,500

Catering minimum at Zoo: \$4,400

Rental price is for one three hour block. More than one block can be rented.



2025 ANS Student Conference Proposal



Contact us

BY PHONE

(505) 245-2137 ext. 105

ONLINE

nuclearmuseum.org/visit/facility-rentals

IN PERSON

Museum Front Store Desk
601 Eubank Blvd. SE
Albuquerque, NM 87123

Follow us

[@nationalnuclearmuseum](https://www.facebook.com/nationalnuclearmuseum)

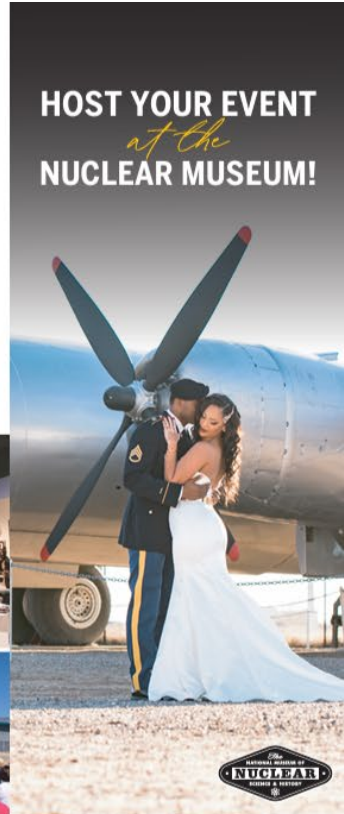
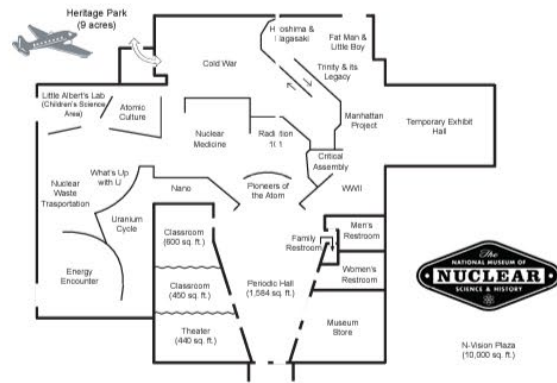
[@nuclear_museum](https://www.instagram.com/nuclear_museum)

[@nuclearmuseum](https://www.twitter.com/nuclearmuseum)

Thank you

for supporting the National Museum of Nuclear Science & History.

nuclearmuseum.org



The National Museum of Nuclear Science & History is the perfect location for a unique and unforgettable event. Our venue offers a fun and educational atmosphere, and the ability to create a customized experience to fit your needs.

What we provide:

- Chairs
- Tablecloths
- Tables
- Security

Available upon request*:

- Podium & microphone
- Projector screen
- Basic sound capabilities
- Museum tours
- Museum store

*Pending availability, additional cost may be applicable

How you can customize your event:

- Hire a caterer/bartender of your choice
- Hire your own DJ or band
- Use a tent for outdoor events
- Bring your own decor*

*We do not allow confetti, glitter, unsecured helium balloons, or smoke. Food and beverage is not permitted in exhibit areas.

Museum Spaces	EVENING RATES		DAYTIME RATES		Additional Hourly Fee	Capacity* (People)
	M - Th (4 Hours)	F - Su (4 Hours)	M - Th (4 Hours)	F - Su (4 Hours)		
Whole Museum*	\$2,250	\$2,750	N/A	N/A	\$425	N/A
Periodic Hall	\$1,250	\$1,750	N/A	N/A	\$225	150+
Theater	\$400	\$450	\$200	\$250	\$100	29
Classroom 1	\$400	\$450	\$200	\$250	\$100	30
Classroom 2	\$400	\$450	\$200	\$250	\$100	30
Theater, Classroom 1 & 2	\$950	\$1,150	\$500	\$650	\$250	89
N-Vision Plaza	\$400	\$450	\$200	\$225	\$100	N/A
Limited Outdoor Space	\$400	\$450	\$200	\$225	\$100	N/A
Heritage Park	\$1,100	\$1,250	\$1,000	\$1,000	\$225	N/A

*Whole Museum represents use of the Periodic Hall and 2 or more other rooms. *Capacity may vary based on setup needs.

Setup and tear down fee
Varies depending upon number of attendees \$150+

Security fee
For all evening rentals 1 per 100 - \$35/hour

Damage deposit
For rentals with alcohol, exhibits, or larger \$250
than 100 attendees

Additional services
Museum store \$35
Guided tour \$35

10% DISCOUNT ON RENTAL FEE
Available to Museum members, military, and Sandia National Laboratories.

Start planning your event today!

Scan this QR code to get in touch with us.

Scan me





Re: Event Support Request

Pats Events <patsevents@unm.edu>

Fri 9/29/2023 2:28 PM

To: Ethan Krammer <ekrammer@unm.edu>

Hello Ethan,

With the information at hand, we would be able to support your transportation needs in April 2025. Our current rate is \$70 per hour. Rates will most likely increase by April of 2025.

Let me know if I can be of any further assistance.

Have a nice afternoon.

Kathy

Kathy Batt

505-925-9580

Event Planning

UNM Parking and Transportation Services

patsevents@unm.edu



From: noreply@formstack.com <noreply@formstack.com>

Sent: Thursday, September 7, 2023 1:12 PM

To: Pats Events <patsevents@unm.edu>

Subject: Event Support Request

[EXTERNAL]



Formstack Submission For: Event Support Request

Submitted at 09/07/23 1:12 PM

Type of Request:: UNM Department

Billing Index: 670-080



2025 ANS Student Conference Proposal



UNM Organization Code (Org Code): SAC

Payment Method:

Organization/Department Name:: UNM American Nuclear Society

Contact Name:: Ethan Krammer

Email: unmans@unm.edu

Address: 101 Broadway Blvd NE #602B
Albuquerque, NM 87102

Phone:: (702) 622-8986

Email: ekrammer@unm.edu

Name of Event: ANS National Student Conference

Date of Event: Apr 03, 2025

Location of Event: Between multiple locations.

Venues:
UNM Student Union Building
ABQ BioPark (903 10th St SW)
National Museum of Nuclear Science & History (601 Eubank Blvd SE)

Hotels:
Marriott Albuquerque (2101 Louisiana Blvd NE)
The Clyde Hotel (330 Tijeras Ave NW)
Embassy Suites by Hilton Albuquerque (1000 Woodward Place NE)

For the evening of Apr. 3 and during the days of Apr. 4 and Apr. 5, we would like rotating shuttle service between the hotel venues and the Student Union Building. For the evenings of Apr. 4 and 5., we would



2025 ANS Student Conference Proposal



like shuttle service between the hotel venues, SUB, and BioPark (Apr. 4) and Nuclear Museum (Apr. 5).

Estimated Attendance:: 700

Resources Requested: Shuttle Service

This is a 3-day event from April 3 2025 to April 5 2025.

Notes: If possible, we would like this quote by Friday 9/22/2023. Thank you!

Trip Details: Round Trip

How many passengers?: 700

Pick-up Time: 07:30 AM

Number of Service Hours: 8 hours

Pick-Up Location: Venues: UNM Student Union Building
ABQ BioPark (903 10th St SW) National Museum of Nuclear Science & History (601 Eubank Blvd SE) Hotels: Marriott Albuquerque (2101 Louisiana Blvd NE) The Clyde Hotel (330 Tijeras Ave NW) Embassy Suites by Hilton Albuquerque (1000 Woodward Place NE)

Destination: Venues: UNM Student Union Building
ABQ BioPark (903 10th St SW) National Museum of Nuclear Science & History (601 Eubank Blvd SE) Hotels: Marriott Albuquerque (2101 Louisiana Blvd NE) The Clyde Hotel (330 Tijeras Ave NW) Embassy Suites by Hilton Albuquerque (1000 Woodward Place NE)

Upon arrival the shuttle should:: Drop-Off

Special Instructions: The shuttle service should be rotating.



Appendix C: Judging Forms

Podium Presentation Rubric

Presentation Title: _____

Presenter(s): _____

University: _____ Undergraduate Graduate

Track: _____

Date: _____ Start Time: _____ End Time: _____

Content (40)

___ / 5 Introduction/Hypothesis

___ / 5 Methods/Analysis

___ / 5 Data

___ / 10 Interpretation of Results

___ / 10 Significance/Conclusions

___ / 5 Citations/References

Visual Appeal (20)

___ / 5 Slide Legibility

___ / 5 Slide Organization

___ / 5 Use of Figures/Tables

___ / 5 Logical Order/Progression

Presentation Deliver (20)

___ / 5 Annunciation and Volume

___ / 5 Preparedness

___ / 5 Professional Attire

___ / 5 Timing

Audience Engagement (20)

___ / 5 Body Language

___ / 5 Eye Contact

___ / 5 Dynamic Voice

___ / 5 Ability to Answer Questions

Total Points: ___ / 100

Comments/Notes:

Judge's Name: _____

Judge's Affiliation: _____



Poster Presentation Rubric

Poster Title: _____ Poster Number: _____
 Presenter(s): _____ Date: _____
 University: _____ Undergraduate Graduate
 Track: _____

Content (40)

- ___ / 5 Introduction/Hypothesis
- ___ / 5 Methods/Analysis
- ___ / 5 Data
- ___ / 10 Interpretation of Results
- ___ / 10 Significance/Conclusions
- ___ / 5 Citations/References

Presentation Deliver (15)

- ___ / 5 Annunciation and Volume
- ___ / 5 Preparedness
- ___ / 5 Professional Attire

Visual Appeal (25)

- ___ / 5 Overall Appearance
- ___ / 5 Poster Legibility
- ___ / 5 Logical Order/Progression
- ___ / 5 Use of Figures/Tables
- ___ / 5 Use of White Space

Audience Engagement (20)

- ___ / 5 Body Language/Use of Poster
- ___ / 5 Eye Contact
- ___ / 5 Dynamic Voice
- ___ / 5 Ability to Answer Questions

Total Points: _____ / 100

Comments/Notes:

Judge's Name: _____

Judge's Affiliation: _____

Appendix D: Graphical Schedule

Time	Thursday	Friday	Saturday
7:00 AM	Registration	Registration	Technical Session: XIII-XV
7:30 AM			
8:00 AM	Modeling for Thermal Hydraulics Workshop	Lunch	Poster Session: Viewing
8:30 AM			
9:00 AM	The National Museum of Nuclear Science and History Tour	Panel: Graduate School	Technical Session: XVI-XVIII
9:30 AM			
10:00 AM	MCNP Workshop	Panel: Advancing Your Career	Panel: Building a Proposal
10:30 AM			
11:00 AM	Registration	Student Section Committee Meeting	Technical Session: XIX-XXI
11:30 AM			
12:00 PM	Dinner at the University of New Mexico	Dinner at the Albuquerque Bio Park	Travel to The National Museum of Nuclear Science and History
12:30 PM			
1:00 PM	Registration	Sandia Tours	Poster Session: Judging
1:30 PM			
2:00 PM	MCNP Workshop	Panel: Nuclear Medicine	Technical Session: XXII-XXIV
2:30 PM			
3:00 PM	Registration	Travel to Bio Park	Technical Session: XXII-XXIV
3:30 PM			
4:00 PM	Social: Nuclear Trivia & Tea Night	Social: 1922 Bar & Lounge	Dinner and Awards at The National Museum of Nuclear Science and History
4:30 PM			
5:00 PM	LANL Tours	Career Fair	Technical Session: XXII-XXIV
5:30 PM			
6:00 PM	Katros Power Tour	Student Section Committee Meeting	Technical Session: XXII-XXIV
6:30 PM			
7:00 PM	Travel to the University of New Mexico	Dinner at the Albuquerque Bio Park	Technical Session: XXII-XXIV
7:30 PM			
8:00 PM	Registration	Sandia Tours	Technical Session: XXII-XXIV
8:30 PM			
9:00 PM	MCNP Workshop	Panel: Nuclear Medicine	Technical Session: XXII-XXIV
9:30 PM			
10:00 PM	Registration	Travel to Bio Park	Technical Session: XXII-XXIV
	Social: Nuclear Trivia & Tea Night	Social: 1922 Bar & Lounge	Dinner and Awards at The National Museum of Nuclear Science and History
	LANL Tours	Career Fair	Technical Session: XXII-XXIV
	Katros Power Tour	Student Section Committee Meeting	Technical Session: XXII-XXIV
	Travel to the University of New Mexico	Dinner at the Albuquerque Bio Park	Technical Session: XXII-XXIV
	Registration	Sandia Tours	Technical Session: XXII-XXIV
	MCNP Workshop	Panel: Nuclear Medicine	Technical Session: XXII-XXIV
	Registration	Travel to Bio Park	Technical Session: XXII-XXIV
	Social: Nuclear Trivia & Tea Night	Social: 1922 Bar & Lounge	Dinner and Awards at The National Museum of Nuclear Science and History



Appendix E: Additional Letters of Support



September 2, 2023

To whom it may concern:

I am extremely delighted to provide this letter of support for the University of New Mexico ANS Student Chapter regarding their application for the 2025 ANS Student Conference Bid. The UNM NE Department is the only nuclear engineering program in New Mexico. Since becoming an independent department in 2014, the UNM NE Department has grown significantly in size and reputation. The faculty size has grown to 25 members, including nine tenure-stream faculty, two National Laboratory Faculty, two lecturers, one research faculty member, and eleven secondary/Letter of Academic Title appointments. The student enrollments have also increased to 88 undergraduate and 58 graduate students. Proximity to Los Alamos National Lab and Sandia National Lab has helped faculty and students actively engage in nuclear energy and security research. The faculty have secured more than \$11M in external research funding.

The UNM ANS Student Chapter has shown vigorous activities. They have bi-monthly meetings in which they include guest speakers from our staff and faculty, nuclear energy research and industry professionals, and ANS National officers. They are extremely active with our local professional chapter, ANS Trinity. They organize numerous outreach events each semester, most notably the Art of Science, "Get to Know Nuclear" for the local girl scouts, and numerous Nuclear Science Week events. They are involved in furthering academic excellence in Nuclear Engineering and regularly participate in Student, Winter, and Annual conferences. Based on their activities and achievements, they have won the Glasstone Award in recent years and are regularly runner-ups if they do not win.

I am confident that UNM ANS can host the 2025 Student Conference successfully, and the UNM NE Department fully supports its application. Moreover, Albuquerque offers a unique venue for the conference.

Sincerely,

Hyoung K. Lee
Professor and Chair
Department of Nuclear Engineering
School of Engineering
University of New Mexico



To whom it may concern,

My name is Christopher Perfetti and I am an Assistant Professor at the University of New Mexico and the Faculty Advisor for the UNM ANS Student Section. I would like to give my strongest recommendation for the UNM ANS Student Section's bid to host an ANS Student Conference.

I have been very actively engaged in ANS over the course of my career – I have been the Chair of two Local Sections, the Chair of two student sections, I have been nominated for the National Board of Directors, and I am currently the Chair-Elect of a Technical Division and the Chair of Alpha Nu Sigma. I have been exposed to many effective groups and successful organizations within ANS, and of these groups the UNM ANS Student Section is by far the most active, energetic, and engaged group I have interacted with.

I began my involvement with the UNM ANS Student Section when I moved to UNM in 2018. I am proud to say that the Student Section has placed for a Glasstone Award every year since 2018, and their activities continue to impress and astound me. They have organized large trips to southern New Mexico to advocate for constructing a spent fuel storage facility; they have organized tours of LANL, Sandia, URENCO, and the Trinity site; they have been very active in public outreach; and prior to COVID they have organized more than 40 social events per year for several years in a row. The UNM ANS Student Section is among, if not the most, capable Section of hosting a successful Student Conference.

As the Immediate Past Chair of the ANS Trinity Section, I can confirm that UNM ANS has a strong relationship with local professionals, and that these professionals are highly likely to support the conference financially through their host organizations, to serve as judges for technical sessions, and to participate in conference events. New Mexico is the birthplace of nuclear science and engineering, and there are a plethora of potential tours and events for students attending a conference in the area. Multiple technical organizations (including ANS) have held conferences or program review meetings in the Albuquerque area, and these events have been well received.

While I certainly do not represent the entire UNM Nuclear Engineering Department or all of UNM, I anticipate that both our NE Department and University would strongly support hosting a student conference. Despite being situated next to two National Laboratories, UNM has never hosted a student conference, and I suspect that our Department and Provost (who is a nuclear engineer!) would welcome this exciting opportunity.

The students who are preparing this student conference bid have met with me several times to discuss their proposal and to seek my feedback. The bid they are preparing is among the best proposals for hosting a conference that I have ever seen, and they have clearly spent a lot of time



2025 ANS Student Conference Proposal



researching all of the necessary information to host a successful conference. Offering them advice on their proposal has been easy for me precisely because they have done so much research into hosting such a conference. Whenever I offer them some advice, they generally have already considered my suggestion and have already researched several viable paths forward.

I am excited for the chance to continue watching the UNM ANS Student Section organize an ANS Student Conference, and, if selected, I have no doubts that they will host a successful meeting. Please feel free to contact me if you have any questions regarding this recommendation.

Sincerely,

-Chris Perfetti, PhD

Assistant Professor, Nuclear Engineering Department
University of New Mexico

Faculty Advisor - UNM ANS Student Section
Faculty Advisor - UNM Alpha Nu Sigma Section

(505)-277-1945 (Office)

cperfetti@unm.edu



P



Office of the Dean

24 August 2023

Members of the ANS Student Conference Selection Committee,

As the Associate Dean of the School of Engineering, I enthusiastically support the bid proposal by the University of New Mexico's Student Section of the American Nuclear Society to host the 2025 Student Conference. UNM's Student Section has a long history at UNM of actively engaging in outreach and educational events in the School of Engineering, the Department of Nuclear Engineering, and the University as a whole. In past years, students and leadership from the student section have attended all national conferences, student conferences, and winter meetings. At a local level, our ANS Student Section engages with the local professionals, sets up tours of facilities and labs, organizes technical bi-monthly meetings, and hosts professional development workshops to enhance their overall job prospects of their membership and classmates. UNM ANS also works with local, state, and national governments on matters of policy and education. UNM ANS works with local high schools and girl scouts on Getting to Know Nuclear events.

By these accomplishments and more, the UNM ANS Student Section committee has demonstrated that they are dedicated and prepared to handle the organization of a large event like the 2025 ANS Student Conference. I have no doubt that if they are selected as hosts for this conference that it will be resounding success.

Sincerely,

Charles B. Fleddermann
Associate Dean for Academic Affairs and Community Engagement



City of
Albuquerque Office
of the Mayor

To the ANS Student Conference

committee: Timothy M. Keller | Mayor

Lawrence Rael | Chief Administrative Officer

Kevin Sourisseau | Chief Operations Officer

Veronica Martinez | Chief of Staff

Sanjay Bhakta | Chief Financial Officer

July 27, 2023

As Mayor of Albuquerque, it is my pleasure to extend an invitation to our beautiful city for the American Nuclear Society's 2025 Student Conference, to be hosted by the University of New Mexico's ANS Student Section.

Albuquerque is a vibrant city with a unique cultural history, making it a premier destination for educational enrichment. The beautiful landscape, rich culture, and superb regional cuisine makes Albuquerque the ideal location for this conference. The presence of Sandia National Labs, our innovative aerospace and directed energy sector, and our excellent programs at the University of New Mexico ensure that the city remains on the cutting edge of science and technology research. The five-time Glasstone Award winning UNM ANS Student Section is the only nuclear program in the state and their outreach work with local Girl Scout troops and high schools provides the community with educational opportunities that wouldn't otherwise exist.

The City of Albuquerque is also deeply committed to sustainability and renewable energy use. We have signed on to the Paris Climate Agreement and are on track to use renewable energy for 100% of municipal operations by 2025, one of the first large American cities to do so. Albuquerque's efforts to mitigate climate change and our rapidly growing research sectors make the city an excellent location in which to talk about the future of energy.

Thank you for considering Albuquerque as the host city of the 2025 ANS Student Conference. Our vibrance, vitality, and hospitality will ensure an enriching experience for all that attend. Sincerely,

Timothy M. Keller
Mayor

P.o. BOX 1293 ALBUQUERQUE, NM 87103 1 CABQ.GOV



Appendix F: UNM Land Acknowledgement

University of New Mexico
Indigenous Peoples' Land and Territory Acknowledgement
A Brown Paper by Native American Faculty approved by the UNM Native American
Faculty Council
Updated 2/25/2021

Introduction

From the time of our ancestors to the present, Indigenous peoples have flourished, persisted, sustained, and rebuilt communities of sovereign nations in the lands on which the University of New Mexico (UNM) now exists. In honor of who we are as Native UNM faculty, we not only offer this paper in service to the university but also in deep respect to the communities to whom we position our contributions. This dynamic, living document has been written and distributed by collective Indigenous faculty since 2018 for the purpose of advocating UNM to implement a meaningful, responsible, and official Indigenous Peoples Land and Territory Acknowledgement statement. The remainder of this paper will consist of providing: a context of New Mexico, specific details in regards to territory, UNM's background in relation to Native peoples, the rationale for a statement, entities that use such a statement, and our articulation of the statement and recommendations for use.

Providing Context of New Mexico (Native Nations and Native American populations)

New Mexico has a vibrant and highly visible Native American population. Native American citizens make up nearly 10.5% of the state's entire population. There are over 20 Native Nations located in New Mexico - twenty Pueblos, three Apache nations, Ute Mountain Ute Tribe, and the Navajo Nation. For many decades, there has also been considerable movement into New Mexico from people representing other Native Nations across the United States and many citizens of those Nations now call New Mexico home. After the Indian Relocation Act of 1956, the Bureau of Indian Affairs administered a government relocation program designed to marginalize Indian reservations through Native urban movement. When Native people migrated they made cities and urban areas an Indigenized space. This movement, along with NM-based Native peoples' movement off their homelands due to their need and desire for jobs and education, has created significant urban and border town (towns bordering reservation boundaries) populations of Native Americans in New Mexico. According to the 2010 U.S. Census, Albuquerque has the 7th largest urban Native population (approximately 30,000 people) in the country among places with more than 100,000 citizens.

Each Native Nation is a sovereign nation with its own government, traditions, language, and cultural practices. What makes Native Nations different from other minority groups is the distinct treaty-based relationship each Nation has with the federal and state governments. The specific Native Nations in New Mexico, or with a historical connection to the state include: the Fort Sill Apache Tribe, the Jicarilla Apache Nation, the Mescalero Apache Tribe, the Navajo Nation, the Piro/Manso/Tiwa Indian Tribe (petitioner for federal acknowledgment), the Ute Mountain Ute Tribe, and the Pueblos of Acoma, Cochiti, Isleta, Jemez, Kewa, Laguna, Nambe,



Ohkay Owingeh, Picuris, Pojoaque, San Felipe, San Ildefonso, Sandia, Santa Ana, Santa Clara, Taos, Tesuque, Ysleta del Sur (All Pueblo Council of Governors Member), Zia, and Zuni.

Physical Territory of University of New Mexico -main campus

The UNM campus is located on 600 acres (2.4 km²) in Albuquerque, New Mexico on the heights a mile east of Downtown Albuquerque, and is split in three parts – central, north, and south campus. The central campus is situated between Central Avenue on the south, Girard Boulevard on the east, Lomas Boulevard on the north, and University Boulevard on the west, and is home to the main academic university. The North Campus, which includes the medical and law schools, and the University of New Mexico hospital is located on the north side of Lomas across from the central campus. The South campus is located a mile south of the central campus, centered around the intersection of University Boulevard and Avenida César Chavez, and includes most of UNM's athletic facilities.

UNM Background - Native American Context

Native peoples have lived in New Mexico and the Southwestern region of the United States for thousands of years. The University of New Mexico (UNM) is located in the heart of Indian Country. It is a place where no Native American students attended for the first forty years of its existence; a college where financial sustainability has always been a concern; a place where Native Americans had to create spaces for themselves; and a college where Native Americans have regarded with the complex and complicated feelings of anger, frustration, nostalgia, and affection.

On February 28, 1889 the New Mexico Territorial Legislature approved the establishment of a state university in the town of Albuquerque. The first classes started three years later in 1892. One hundred and eight men and women took classes. None of them were Native American. From 1892 to 1927, almost no Native American students attended the University of New Mexico. During this time, education for Native students was generally limited to vocational schooling, yet some colleges like Dartmouth and Harvard committed to educating Native students alongside their general student population. Beginning with President James Zimmerman's administration in 1927, thousands of Native American students have attended and graduated from UNM.

UNM had a curriculum based on western ideology and epistemology. Many Native American students in the late nineteenth and early twentieth centuries were sent to boarding schools run by the Bureau of Indian Affairs (BIA). Very few Native American men and women attended colleges and universities during this time. The primary mission of boarding school was to assimilate Native American children into an American way of life. Thousands of Native American children were educated in boarding schools and for many of them they became alienated from their own home communities as well as American society. For some, boarding school education helped them succeed in American life while for others it was a devastating and traumatic experience contributing to an early death.

A relationship was formed between the University of New Mexico Hospital (UNMH) and Native Americans after a federal contract was signed in 1952 between the Bureau of Indian Affairs, the Indian Health Service, the Bernalillo Board of County Commissioners, the Board of Trustees of Bernalillo County Hospital, and the State of New Mexico for Bernalillo County.



UNMH agreed to receive and treat Native American patients as part of this contract, which has been periodically updated since its original signing. Several other UNM entities have also developed and work continuously on strengthening relationships with Native Nations and Indigenous peoples.

The UNM Indigenous Peoples Land and Territory Acknowledgement statement was presented to and accepted by New Mexico tribal officials during a meeting between tribal officials and UNM President Garnett Stokes in 2020.

Background and Rationale on Indigenous Land and Territory Acknowledgment

As stated before there are twenty-five tribal nations who have territorial connections within the State of New Mexico, we hope that by UNM honoring and using an Indigenous Land and Territory Acknowledgment we will begin to institutionalize Indigenous Peoples as a living part of the university’s memory. The formalization of an Indigenous Land and Territory Acknowledgment began in early spring 2018. The development has now moved forward from one Native American faculty member to a group of Native American faculty who support this idea and policy to be embedded and practiced at the University of New Mexico (see DEI website for a list of authors). The hope is that the UNM administration and Board of Regents support such a statement that we begin to center an Indigenous perspective and a collective Indigenous voice. This should be inherently done but it is still lacking throughout the university’s policies and practices. This is a basic right as stated by the UNDRIP (United Nations Declarations on the Rights of Indigenous Peoples), article 15. There are additional articles from this document that are relevant to this statement: Articles 1, 8, 13, 15, 16, 21, 24, 26, and 31.

Article 15 states:

1. Indigenous peoples have the right to the dignity and diversity of their cultures, traditions, histories and aspirations which shall be appropriately reflected in education and public information.
2. States shall take effective measures, in consultation and cooperation with the Indigenous peoples concerned, to combat prejudice and eliminate discrimination and to promote tolerance, understanding and good relations among Indigenous peoples and all other segments of society.

Listing the university and organizations that utilize this type of statement

There are few universities and colleges who have a policy and practice through the upper administration in acknowledging the Indigenous peoples and territory. Those universities include, but are not limited to, Arizona State University, University of Toronto (in Ontario, Canada), Indiana University, Colorado State University, and South Dakota State University. However, there is an increase in education based organizations who utilize a similar protocol at the opening of their conferences and events. Some of those specifically known to do this are: American Indian Studies Association, the National Indian Education Association, National Association of Student Personnel Administrators, Native American and Indigenous Studies Association, Association for the Study of Higher Education, and the American Educational Research Association Indigenous Peoples of the Americas Special Interest Group. Now that there is more vocalization and reclaiming of our Indigenous ways of being Indigenous scholars,



practitioners and peoples are demanding and working towards making this type of statement the new norm for academia and conference proceedings.

Suggested UNM Indigenous Peoples’ Land and Territory Acknowledgment (updated 02/18/2020)

The recommended acknowledgement state to be used as stated below:

UNM Land Acknowledgement Statement

Founded in 1889, the University of New Mexico sits on the traditional homelands of the Pueblo of Sandia. The original peoples of New Mexico – Pueblo, Navajo, and Apache – since time immemorial, have deep connections to the land and have made significant contributions to the broader community statewide. We honor the land itself and those who remain stewards of this land throughout the generations and also acknowledge our committed relationship to Indigenous peoples. We gratefully recognize our history.

How and when it would be used

We welcome all members, both Native and non-Natives, of the UNM community to share the land acknowledgement in their classes, on their syllabus, in meetings, public gatherings, and or prayers. The statement could be read out loud at events and shared on agendas and other documents. We recommend that this acknowledgement also be incorporated at Board of Regents meetings, convocations (university wide and college specific), and other major events held by UNM. The Indigenous Peoples’ land and territory acknowledgement recognizes and shows respect for the traditional lands occupied by the Indigenous peoples in New Mexico.

How to use in syllabus

UNM Instructors may adopt this land acknowledgment statement to place in their course syllabus. Instructors could adapt the statement to show specific ways that their course honors the land acknowledgment. By having the background provided in this Brown Paper, written by Native colleagues, Instructors would have the self-assurance that including a Land Acknowledgement in their syllabus is genuine on their personal behalf.

How to be adopted by other programs/departments

UNM colleges, schools, departments, and programs may adopt this land acknowledgment and adapt it to reflect their specific values and to reflect their specific relationships and initiatives with Indigenous peoples.

Student and Alumni organizations

Student and Alumni groups are welcome to use the land acknowledgement in meetings, public gatherings and prayers.

Request for use of this statement

We formally request use of the Indigenous Peoples’ Land and Territory acknowledgement statement by the UNM President, administrators, faculty, and any other staff within the university. We hereby, request this be effective immediately and that it be disseminated for support and incorporation.